

MEP LEGEND

- EXHAUST AIR
- ERV OUTSIDE AIR INTAKE
- DRYER EXHAUST
- INTERMITTENT EXHAUST
- CONTINUOUS SUPPLY
- CONTINUOUS EXHAUST

*CFM NOTED ON PLAN

UNIT REFLECTED CEILING PLAN
GENERAL NOTES

- SEE SHEET G011EW FOR ALL MOUNTING HEIGHTS FOR ALL FINISH MATERIALS, TRIM, AND ELECTRICAL FIXTURES.
- REVIEW LIGHTING LAYOUT PRIOR TO FRAMING FLOOR AND CEILING JOISTS. WHERE LIGHTING CONFLICTS WITH FRAMING MEMBERS, REVIEW WITH ARCHITECT PRIOR TO MOVING FIXTURES.
- CENTER FIXTURES ON ROOMS & HALLWAYS UNLESS NOTED OTHERWISE.
- SEE SPEC APPENDIX E FOR LIGHTING FIXTURE SCHEDULE.
- SEE SPEC APPENDIX E FOR FINISH MATERIALS.
- CEILING FINISH IS PAINTED GYP BOARD, U.N.O.
- CEILING HEIGHTS ARE DETERMINED BY BOTTOM OF STRUCTURAL FRAMING HEIGHT UNLESS OTHERWISE NOTED.
- REFER TO A500 SERIES FOR ELECTRICAL FIXTURE SCHEDULE.
- SEE A600 SHEETS FOR STEP LIGHT LOCATIONS.

RCP LEGEND

PT-C	GYP BD CEILING, FURR DOWN 12" FROM STRUCTURAL FRAMING, TYP.
WD-5	WOOD SOFFIT
MTL-1	METAL PANEL

REFLECTED CEILING PLAN LEGEND

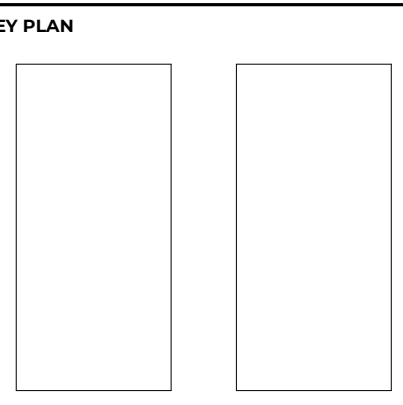
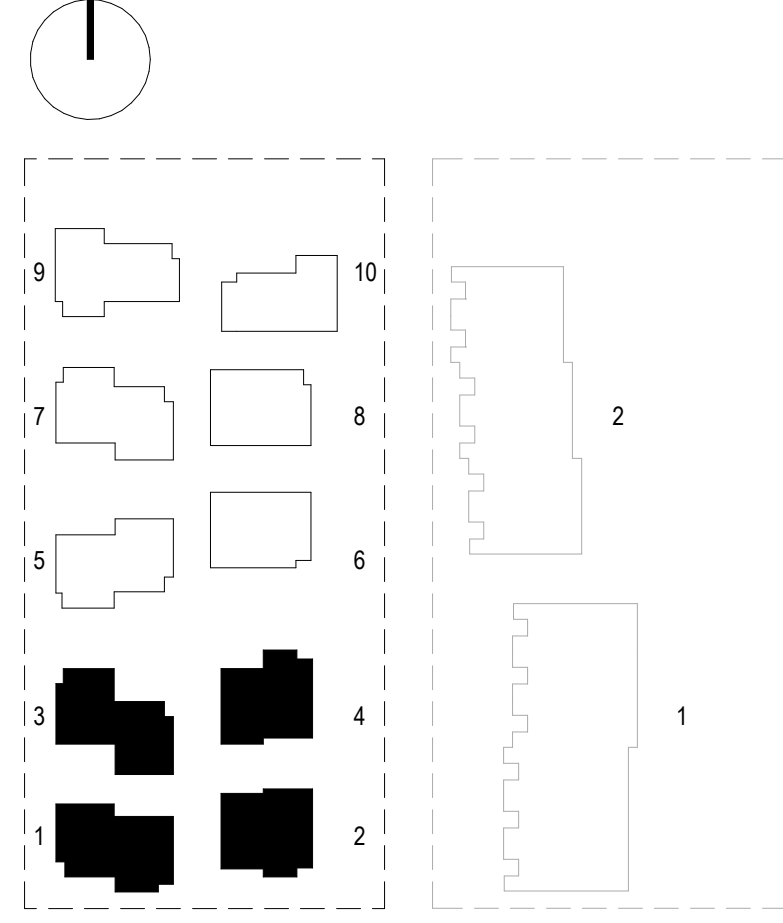
F01	4" RECESSED DOWNLIGHT
F01F	FIRE RATED
F01W	WET RATED
F02	4" RECESSED DOWNLIGHT SLOPED
F02F	FIRE RATED
F02W	WET RATED
F03	SURFACE MOUNTED DOWNLIGHT - CLOSETS
F04	VANITY SCONCE
F05	UNDER CABINET LIGHT
F06	SURFACE MOUNTED DOWNLIGHT - BEDROOMS
F07A	KITCHEN PENDANT LIGHT
F07B	KITCHEN LINEAR PENDANT LIGHT
F08	DINING CEILING PENDANT
F09	EXTERIOR SCONCE
F10	WALL UTILITY
F15	STEP LIGHT

RCP / ELECTRICAL LEGEND

240VAC DEDICATED OUTLET
240VAC DED. ELEC. VEHICLE CHARGING OUTLET @ 42" AFF (50 AMP BREAKER)
DUPLEX OUTLET
DUPLEX OUTLET (TOP OUTLET SWITCHED)
QUADPLEX OUTLET
OUTLET W/ GROUND FAULT INTERRUPT
WATERPROOF OUTLET W/ GFI
OUTLET W/ (2) SV USB PORTS
120VAC OUTLET FOR APPLIANCE. SEE SPEC.
FLOOR DUPLEX OUTLET
FLOOR QUADPLEX OUTLET
DIMMER WITH ON/OFF SWITCH
SWITCH
3-WAY SWITCH
GARAGE DOOR OPENER SWITCH
GARAGE DOOR LOW VOLTAGE SENSOR
CRADLE FOR FAN REMOTE
COMBO VOICEDATA JACK
DATA JACK
VOICE JACK
CEILING WAP DATA, ALIGN W/ ADJ. LIGHTING
TELEVISION CABLE JACK
SMOKE DETECTOR
CARBON MONOXIDE (CO) DETECTOR
COMBO SMOKE/CO DETECTOR
MOTION SENSOR
THERMOSTAT
CHIMES
EXHAUST FAN
RECESSED STRUCTURED MEDIA ENCLOSURE FOR HOME SECURITY & LOW-VOLTAGE
MEDIA OUTLET



1 BLDGS 1-4 - LEVEL 01 RCP
1/4" = 1'-0" REF: 1/A500.0W



STAMP
NOT FOR CONSTRUCTION

SDCI STAMP

ISSUES

100% CD BID SET	06.30.2023
-----------------	------------

SHEET INFORMATION
REFLECTED CEILING PLAN LEVEL 01 BLDGS 1-4
A151.0W

Storybuilt holds all rights of copyright to these drawings. Any reproduction, alteration, modification, reuse or incorporation into other documents may not occur without the prior written permission of Storybuilt.
© 2022 Storybuilt, LLC

MEP LEGEND

- ⦶ EXHAUST AIR
- ⇄ ERV OUTSIDE AIR INTAKE
- ☒ DRYER EXHAUST
- ⊠ INTERMITTENT EXHAUST
- ⊡ CONTINUOUS SUPPLY
- ⊟ CONTINUOUS EXHAUST

*CFM NOTED ON PLAN

- UNIT REFLECTED CEILING PLAN GENERAL NOTES**
- SEE SHEET G011EW FOR ALL MOUNTING HEIGHTS FOR ALL FINISH MATERIALS, TRIM, AND ELECTRICAL FIXTURES.
 - REVIEW LIGHTING LAYOUT PRIOR TO FRAMING FLOOR AND CEILING JOISTS. WHERE LIGHTING CONFLICTS WITH FRAMING MEMBERS, REVIEW WITH ARCHITECT PRIOR TO MOVING FIXTURES.
 - CENTER FIXTURES ON ROOMS & HALLWAYS UNLESS NOTED OTHERWISE.
 - SEE SPEC APPENDICES FOR LIGHTING FIXTURE SCHEDULE.
 - SEE SPEC APPENDIX E FOR FINISH MATERIALS.
 - CEILING FINISH IS PAINTED GYP BOARD, U.N.O.
 - CEILING HEIGHTS ARE DETERMINED BY BOTTOM OF STRUCTURAL FRAMING HEIGHT UNLESS OTHERWISE NOTED.
 - REFER TO A500 SERIES FOR ELECTRICAL FIXTURE SCHEDULE.
 - SEE A600 SHEETS FOR STEP LIGHT LOCATIONS.

RCP LEGEND

- PT-C GYP BD CEILING, FURR DOWN 12" FROM STRUCTURAL FRAMING, TYP.
- WD-5 WOOD SOFFIT
- MTL-1 METAL PANEL

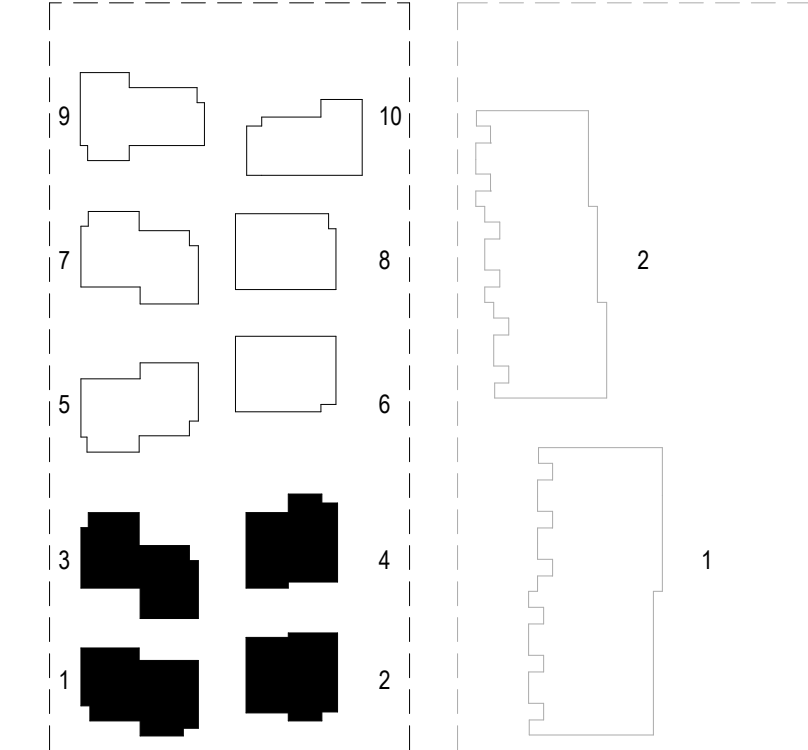
- REFLECTED CEILING PLAN LEGEND**
- F01 4" RECESSED DOWNLIGHT
 - ⦶ F01F FIRE RATED
 - ⦶ F01W WET RATED
 - F02 4" RECESSED DOWNLIGHT SLOPED
 - ⦶ F02F FIRE RATED
 - ⦶ F02W WET RATED
 - ⦶ F03 SURFACE MOUNTED DOWNLIGHT - CLOSETS
 - ⦶ F04 VANITY SCIENCE
 - ⦶ F05 UNDER CABINET LIGHT
 - ⦶ F06 SURFACE MOUNTED DOWNLIGHT - BEDROOMS
 - ⦶ F07A KITCHEN PENDANT LIGHT
 - ⦶ F07B KITCHEN LINEAR PENDANT LIGHT
 - ⦶ F08 DINING CEILING PENDANT
 - ⦶ F09 EXTERIOR SCIENCE
 - ⦶ F10 WALL UTILITY
 - ⦶ F15 STEP LIGHT

RCP / ELECTRICAL LEGEND

240VAC DEDICATED OUTLET
240VAC DED. ELEC. VEHICLE CHARGING OUTLET @ 40'APF (50 AMP BREAKER)
DUPLEX OUTLET
DUPLEX OUTLET (TOP OUTLET SWITCHED)
QUADPLEX OUTLET
OUTLET W/ GROUND FAULT INTERRUPT
WATERPROOF OUTLET W/ GFI
OUTLET W/ (2) 5V USB PORTS
120VAC OUTLET FOR APPLIANCE. SEE SPEC.
FLOOR DUPLEX OUTLET
FLOOR QUADPLEX OUTLET
DIMMER WITH ON/OFF SWITCH
SWITCH
3-WAY SWITCH
GARAGE DOOR OPENER SWITCH
GARAGE DOOR LOW VOLTAGE SENSOR
CRADLE FOR FAN REMOTE
COMBO VOICE/DATA JACK
DATA JACK
VOICE JACK
CEILING WAP DATA, ALIGN W/ ADJ. LIGHTING
TELEVISION/CABLE JACK
SMOKE DETECTOR
CARBON MONOXIDE (CO) DETECTOR
COMBO SMOKE/CO DETECTOR
MOTION SENSOR
THERMOSTAT
CHIMES
EXHAUST FAN
RECESSED STRUCTURED MEDIA ENCLOSURE FOR HOME SECURITY & LOW-VOLTAGE
MEDIA OUTLET



1 BLDGS 1-4 - LEVEL 02 RCP
 1/4" = 1'-0" REF: 1/A500.0W



KEY PLAN

STAMP
NOT FOR CONSTRUCTION

SDCI STAMP

ISSUES

NO.	DESCRIPTION	DATE

MEP LEGEND

- ⊗ EXHAUST AIR
- ⊗ ERV OUTSIDE AIR INTAKE
- ⊕ DRYER EXHAUST
- ⊗ INTERMITTENT EXHAUST
- ⊕ CONTINUOUS SUPPLY
- ⊕ CONTINUOUS EXHAUST

*CFM NOTED ON PLAN

- UNIT REFLECTED CEILING PLAN GENERAL NOTES**
- SEE SHEET G011EW FOR ALL MOUNTING HEIGHTS FOR ALL FINISH MATERIALS, TRIM, AND ELECTRICAL FIXTURES.
 - REVIEW LIGHTING LAYOUT PRIOR TO FRAMING FLOOR AND CEILING JOISTS. WHERE LIGHTING CONFLICTS WITH FRAMING MEMBERS, REVIEW WITH ARCHITECT PRIOR TO MOVING FIXTURES.
 - CENTER FIXTURES ON ROOMS & HALLWAYS UNLESS NOTED OTHERWISE.
 - SEE SPEC APPENDICES FOR LIGHTING FIXTURE SCHEDULE.
 - SEE SPEC APPENDIX E FOR FINISH MATERIALS.
 - CEILING FINISH IS PAINTED GYP BOARD, U.N.O
 - CEILING HEIGHTS ARE DETERMINED BY BOTTOM OF STRUCTURAL FRAMING HEIGHT UNLESS OTHERWISE NOTED.
 - REFER TO A500 SERIES FOR ELECTRICAL FIXTURE SCHEDULE.
 - SEE A600 SHEETS FOR STEP LIGHT LOCATIONS.

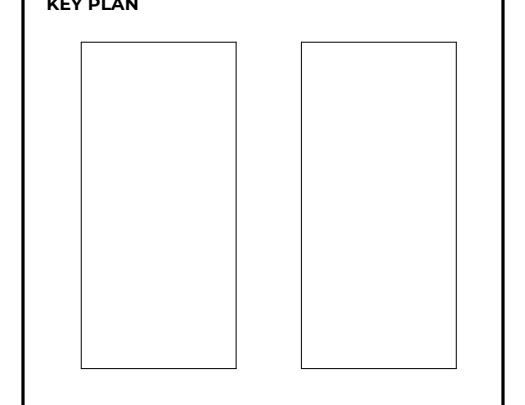
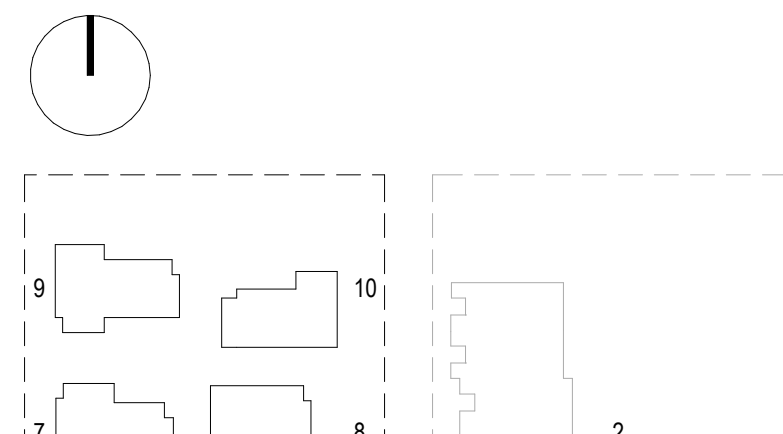
RCP LEGEND

- PT-C GYP BD CEILING, FURR DOWN 12" FROM STRUCTURAL FRAMING, TYP.
- WD-5 WOOD SOFFIT
- MTL-1 METAL PANEL

- REFLECTED CEILING PLAN LEGEND**
- F01 4" RECESSED DOWNLIGHT
 - F01F FIRE RATED
 - F01W WET RATED
 - F02 4" RECESSED DOWNLIGHT SLOPED
 - F02F FIRE RATED
 - F02W WET RATED
 - F03 SURFACE MOUNTED DOWNLIGHT - CLOSETS
 - F04 VANITY SCIENCE
 - F05 UNDER CABINET LIGHT
 - F06 SURFACE MOUNTED DOWNLIGHT - BEDROOMS
 - F07A KITCHEN PENDANT LIGHT
 - F07B KITCHEN LINEAR PENDANT LIGHT
 - F08 DINING CEILING PENDANT
 - F09 EXTERIOR SCIENCE
 - F10 WALL UTILITY
 - F15 STEP LIGHT

RCP / ELECTRICAL LEGEND

240VAC	240VAC DEDICATED OUTLET
240VAC DED. ELEC. VEHICLE CHARGING	240VAC DED. ELEC. VEHICLE CHARGING OUTLET @ 42'APF (50 AMP BREAKER)
DUPLX	DUPLX OUTLET
DUPLX (S)	DUPLX OUTLET (TOP OUTLET SWITCHED)
QUADPLX	QUADPLX OUTLET
OUTLET (GF)	OUTLET W/ GROUND FAULT INTERRUPT
WATERPROOF (GFI)	WATERPROOF OUTLET W/ GFI
USB (2)	OUTLET W/ (2) 5V USB PORTS
120VAC (APP)	120VAC OUTLET FOR APPLIANCE. SEE SPEC.
FLOOR DUPLX	FLOOR DUPLX OUTLET
FLOOR QUADPLX	FLOOR QUADPLX OUTLET
DIMMER (ON/OFF)	DIMMER WITH ON/OFF SWITCH
SW	SWITCH
3WAY	3-WAY SWITCH
GARAGE (OP)	GARAGE DOOR OPENER SWITCH
GARAGE (LV)	GARAGE DOOR LOW VOLTAGE SENSOR
CRADLE	CRADLE FOR FAN REMOTE
COMBO (V/J)	COMBO VOICE/DATA JACK
DATA	DATA JACK
VOICE	VOICE JACK
CEILING (WAP)	CEILING WAP DATA. ALIGN W/ ADJ. LIGHTING
TELEVISION	TELEVISION/CABLE JACK
SMOKE (SD)	SMOKE DETECTOR
MONOXIDE (CM)	CARBON MONOXIDE (CO) DETECTOR
SMOKE/CO (SIC)	COMBO SMOKE/CO DETECTOR
MOTION	MOTION SENSOR
THERM	THERMOSTAT
CHIMES	CHIMES
EXHAUST (FAN)	EXHAUST FAN
RECESSED (SEC)	RECESSED STRUCTURED MEDIA ENCLOSURE FOR HOME SECURITY & LOW-VOLTAGE
MEDIA (OUTLET)	MEDIA OUTLET



NOT FOR CONSTRUCTION

SICI STAMP

ISSUES

100% CD BID SET	06/30/2023

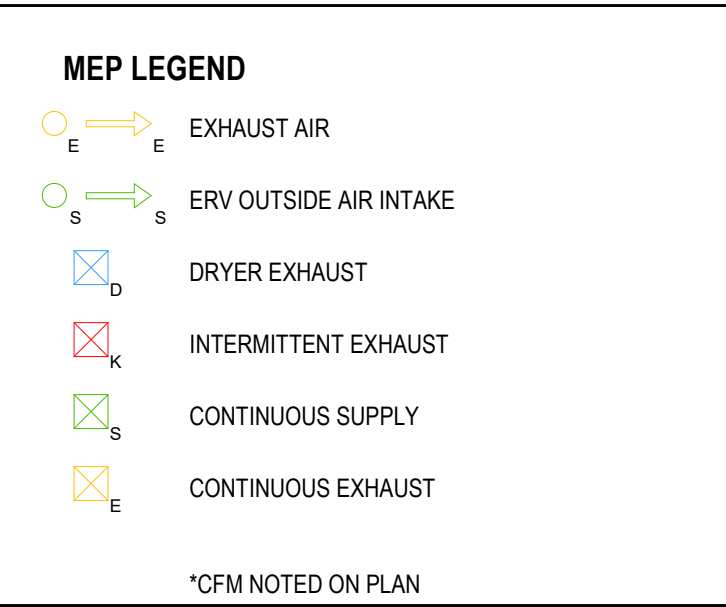
REFLECTED CEILING PLAN LEVEL 03 BLDGS 1-4

A151.2W

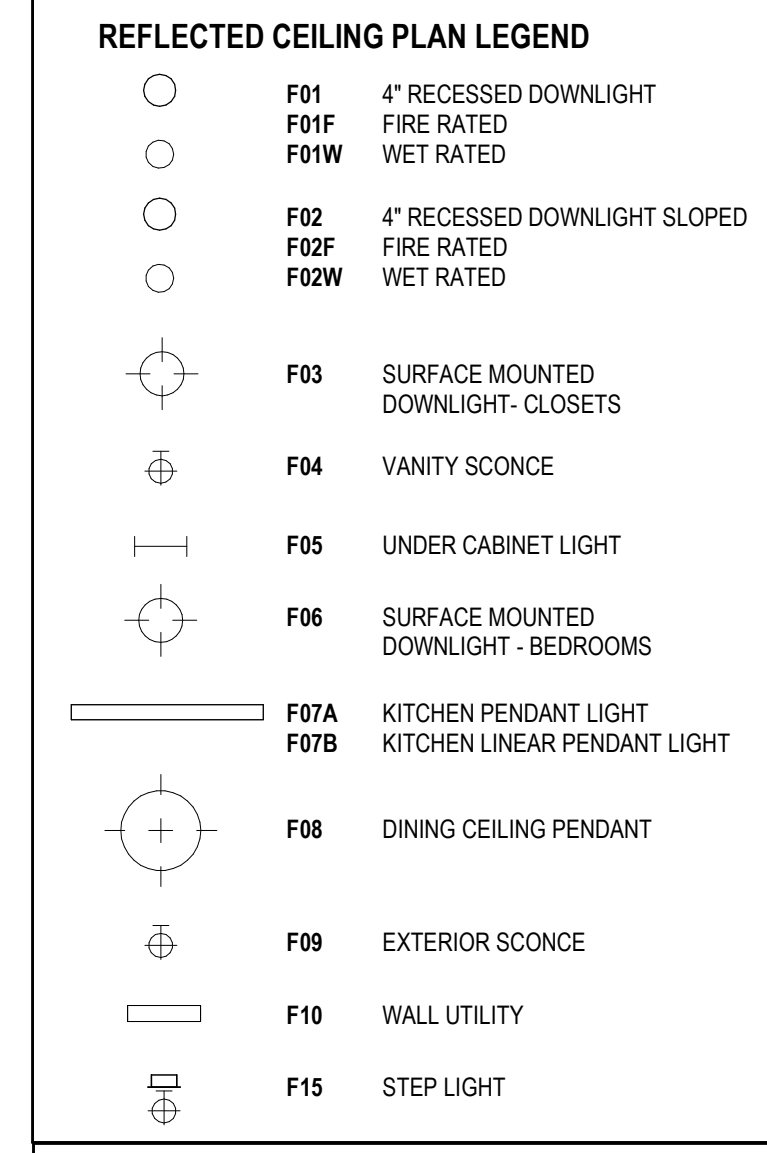
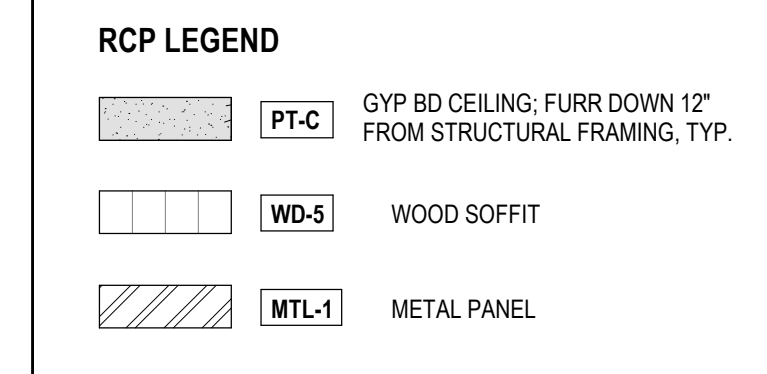
StoryBuilt holds all rights of copyright to these drawings. Any reproduction, alteration, modification, usage or incorporation into other documents may not occur without the prior written permission of StoryBuilt.
 © 2022 StoryBuilt, LLC



1 BLDGS 1-4 - LEVEL 03 RCP
 1/4" = 1'-0" REF: 1/A500.0W

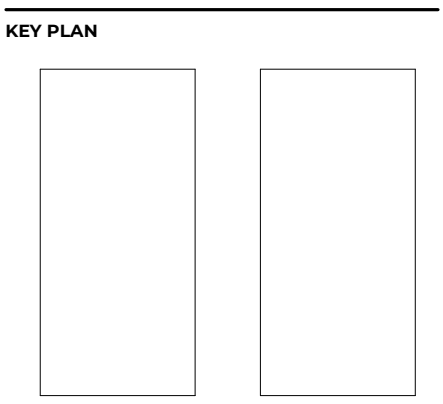
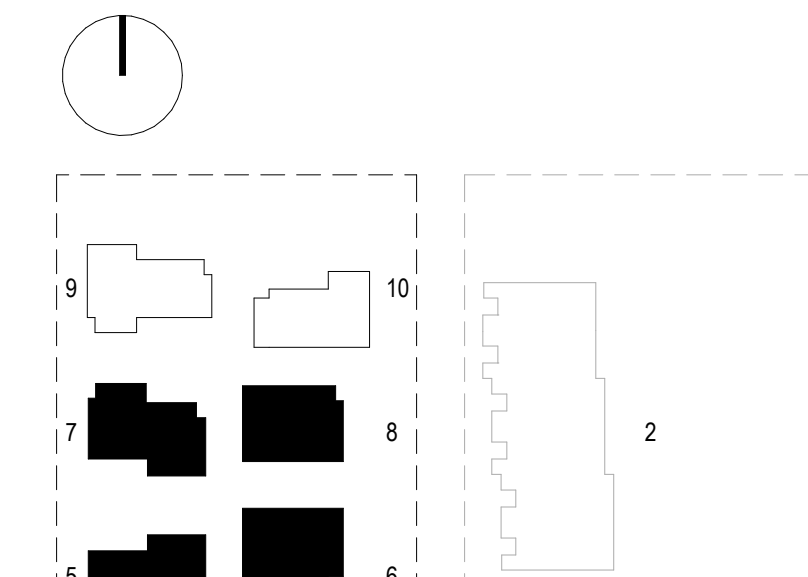


- UNIT REFLECTED CEILING PLAN GENERAL NOTES**
- SEE SHEET G011EW FOR ALL MOUNTING HEIGHTS FOR ALL FINISH MATERIALS, TRIM, AND ELECTRICAL FIXTURES.
 - REVIEW LIGHTING LAYOUT PRIOR TO FRAMING FLOOR AND CEILING JOISTS. WHERE LIGHTING CONFLICTS WITH FRAMING MEMBERS, REVIEW WITH ARCHITECT PRIOR TO MOVING FIXTURES.
 - CENTER FIXTURES ON ROOMS & HALLWAYS UNLESS NOTED OTHERWISE
 - SEE SPEC APPENDICES FOR LIGHTING FIXTURE SCHEDULE
 - SEE SPEC APPENDIX E FOR FINISH MATERIALS
 - CEILING FINISH IS PAINTED GYP BOARD, U.N.O
 - CEILING HEIGHTS ARE DETERMINED BY BOTTOM OF STRUCTURAL FRAMING HEIGHT UNLESS OTHERWISE NOTED.
 - REFER TO A500 SERIES FOR ELECTRICAL FIXTURE SCHEDULE
 - SEE A600 SHEETS FOR STEP LIGHT LOCATIONS



RCP / ELECTRICAL LEGEND

240VAC DEDICATED OUTLET
240VAC DED. ELEC. VEHICLE CHARGING OUTLET @ 40'AMP (50 AMP BREAKER)
DUPLEX OUTLET
DUPLEX OUTLET (TOP OUTLET SWITCHED)
QUADPLEX OUTLET
OUTLET W/ GROUND FAULT INTERRUPT
WATERPROOF OUTLET W/ GFI
OUTLET W/ (2) 5V USB PORTS
120VAC OUTLET FOR APPLIANCE. SEE SPEC.
FLOOR DUPLEX OUTLET
FLOOR QUADPLEX OUTLET
DIMMER WITH ON/OFF SWITCH
SWITCH
3-WAY SWITCH
GARAGE DOOR OPENER SWITCH
GARAGE DOOR LOW VOLTAGE SENSOR
CRADLE FOR FAN REMOTE
COMBO VOICE/DATA JACK
DATA JACK
VOICE JACK
CEILING WAP DATA. ALIGN W/ ADJ. LIGHTING
TELEVISION/CABLE JACK
(SD) SMOKE DETECTOR
(CM) CARBON MONOXIDE (CO) DETECTOR
(SIC) COMBO SMOKE/CO DETECTOR
MOTION SENSOR
THERMOSTAT
CHIMES
EXHAUST FAN
RECESSED STRUCTURED MEDIA ENCLOSURE FOR HOME SECURITY & LOW-VOLTAGE
(C) MEDIA OUTLET



STAMP
 NOT FOR CONSTRUCTION

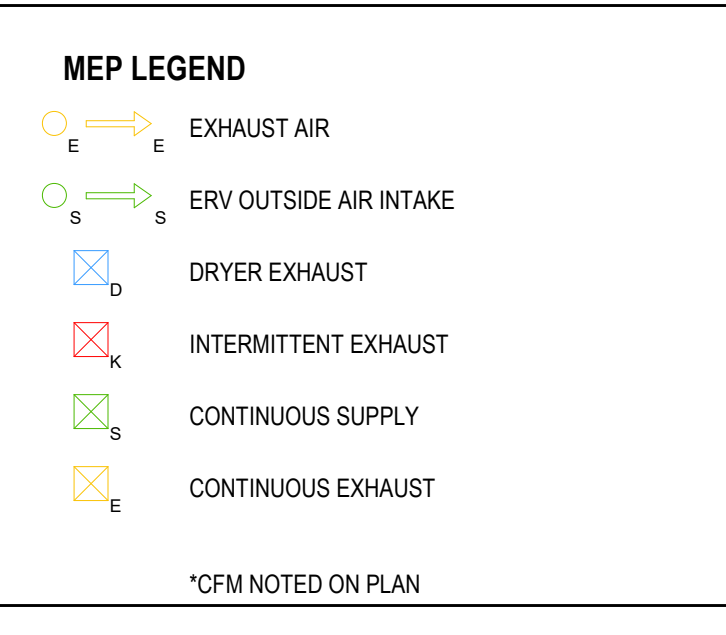
SICI STAMP

ISSUES

NO.	DESCRIPTION	DATE

SHEET INFORMATION
 REFLECTED CEILING PLAN LEVEL 01 BLDGS 5-8

A152.0W
 © 2022 StoryBuilt, LLC



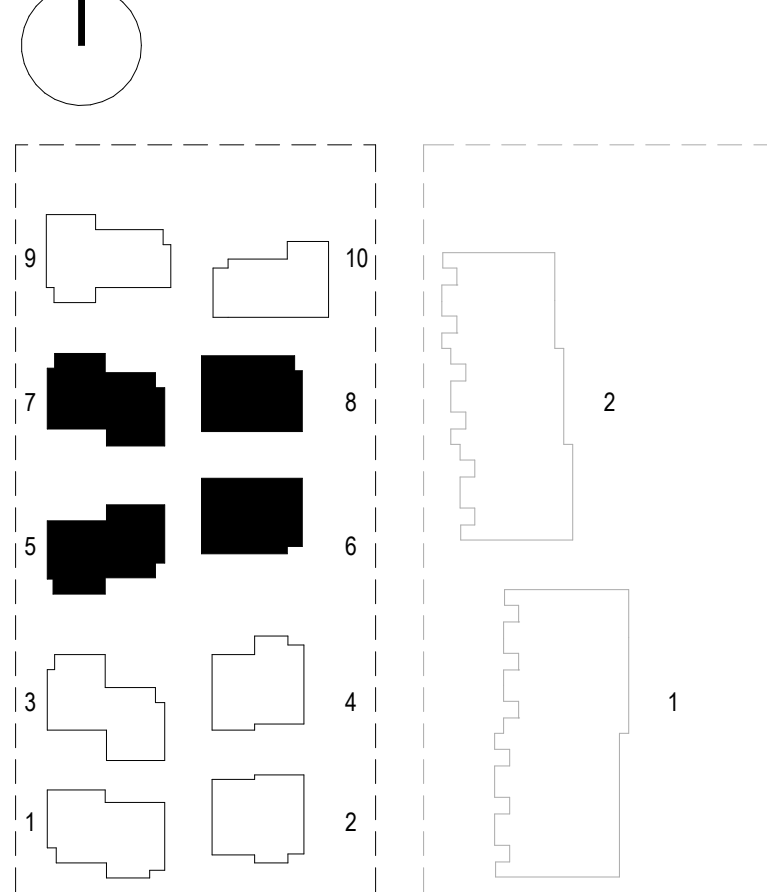
- ### UNIT REFLECTED CEILING PLAN GENERAL NOTES
1. SEE SHEET G011EW FOR ALL MOUNTING HEIGHTS FOR ALL FINISH MATERIALS, TRIM, AND ELECTRICAL FIXTURES.
 2. REVIEW LIGHTING LAYOUT PRIOR TO FRAMING FLOOR AND CEILING JOISTS. WHERE LIGHTING CONFLICTS WITH FRAMING MEMBERS, REVIEW WITH ARCHITECT PRIOR TO MOVING FIXTURES.
 3. CENTER FIXTURES ON ROOMS & HALLWAYS UNLESS NOTED OTHERWISE.
 4. SEE SPEC APPENDICES FOR LIGHTING FIXTURE SCHEDULE.
 5. SEE SPEC APPENDIX E FOR FINISH MATERIALS.
 6. CEILING FINISH IS PAINTED GYP BOARD, U.N.O.
 7. CEILING HEIGHTS ARE DETERMINED BY BOTTOM OF STRUCTURAL FRAMING HEIGHT UNLESS OTHERWISE NOTED.
 8. REFER TO A500 SERIES FOR ELECTRICAL FIXTURE SCHEDULE.
 9. SEE A600 SHEETS FOR STEP LIGHT LOCATIONS.

- ### RCP LEGEND
- GYP BD CEILING, FURR DOWN 12" FROM STRUCTURAL FRAMING, TYP.
 - WOOD SOFFIT
 - METAL PANEL

- ### REFLECTED CEILING PLAN LEGEND
- 4" RECESSED DOWNLIGHT
 - FIRE RATED
 - WET RATED
 - 4" RECESSED DOWNLIGHT SLOPED
 - FIRE RATED
 - WET RATED
 - SURFACE MOUNTED DOWNLIGHT - CLOSETS
 - VANITY SCONCE
 - UNDER CABINET LIGHT
 - SURFACE MOUNTED DOWNLIGHT - BEDROOMS
 - KITCHEN PENDANT LIGHT
 - KITCHEN LINEAR PENDANT LIGHT
 - DINING CEILING PENDANT
 - EXTERIOR SCONCE
 - WALL UTILITY
 - STEP LIGHT

RCP / ELECTRICAL LEGEND

	240VAC DEDICATED OUTLET
	240VAC DED. ELEC. VEHICLE CHARGING OUTLET @ 42'APF (50 AMP BREAKER)
	DUPLEX OUTLET
	DUPLEX OUTLET (TOP OUTLET SWITCHED)
	QUADPLEX OUTLET
	OUTLET W/ GROUND FAULT INTERRUPT
	WATERPROOF OUTLET W/ GFI
	OUTLET W/ (2) 5V USB PORTS
	120VAC OUTLET FOR APPLIANCE. SEE SPEC.
	FLOOR DUPLEX OUTLET
	FLOOR QUADPLEX OUTLET
	DIMMER WITH ON/OFF SWITCH
	SWITCH
	3-WAY SWITCH
	GARAGE DOOR OPENER SWITCH
	GARAGE DOOR LOW VOLTAGE SENSOR
	CRADLE FOR FAN REMOTE
	COMBO VOICE/DATA JACK
	DATA JACK
	VOICE JACK
	CEILING WAP DATA. ALIGN W/ ADJ. LIGHTING
	TELEVISION/CABLE JACK
	SMOKE DETECTOR
	CARBON MONOXIDE (CO) DETECTOR
	COMBO SMOKE/CO DETECTOR
	MOTION SENSOR
	THERMOSTAT
	CHIMES
	EXHAUST FAN
	RECESSED STRUCTURED MEDIA ENCLOSURE FOR HOME SECURITY & LOW-VOLTAGE
	MEDIA OUTLET



1 BLDGS 5-8 - LEVEL 02 RCP
1/4" = 1'-0" REF: 1/A500.0W

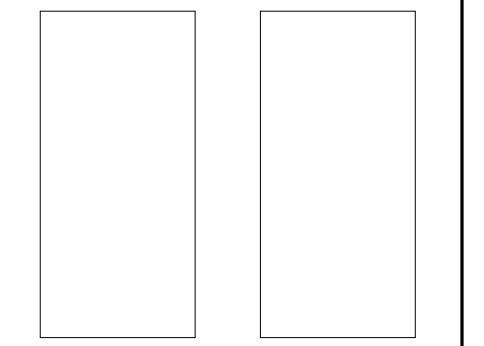


900 S. 1st St., Suite 703
Austin, Texas 78704
512.289.1313
storybuilt.com

SUMIE WEST PARCEL

1700 S Walker Street
Seattle, Washington 98144
48 project no. 2023

KEY PLAN



STAMP
NOT FOR CONSTRUCTION

SOCI STAMP

ISSUES

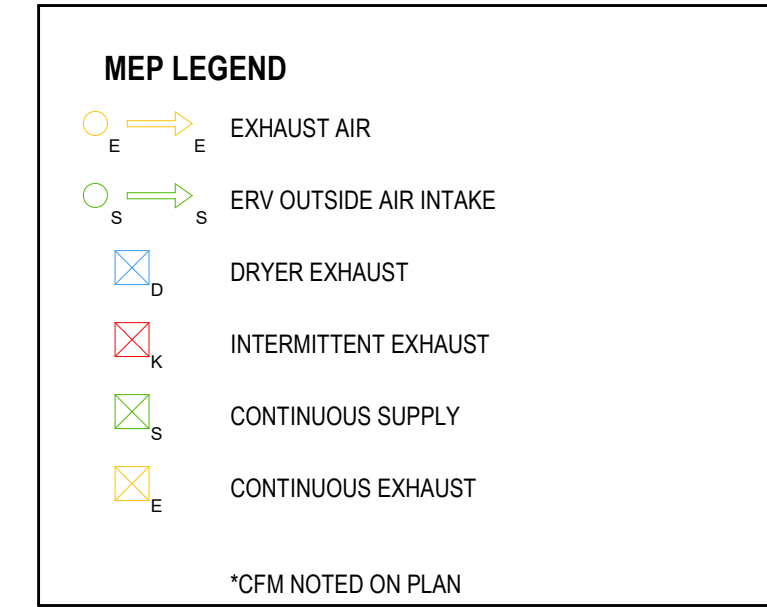
NO.	DESCRIPTION	DATE

SHEET INFORMATION

REFLECTED CEILING PLAN LEVEL 02 BLDGS 5-8

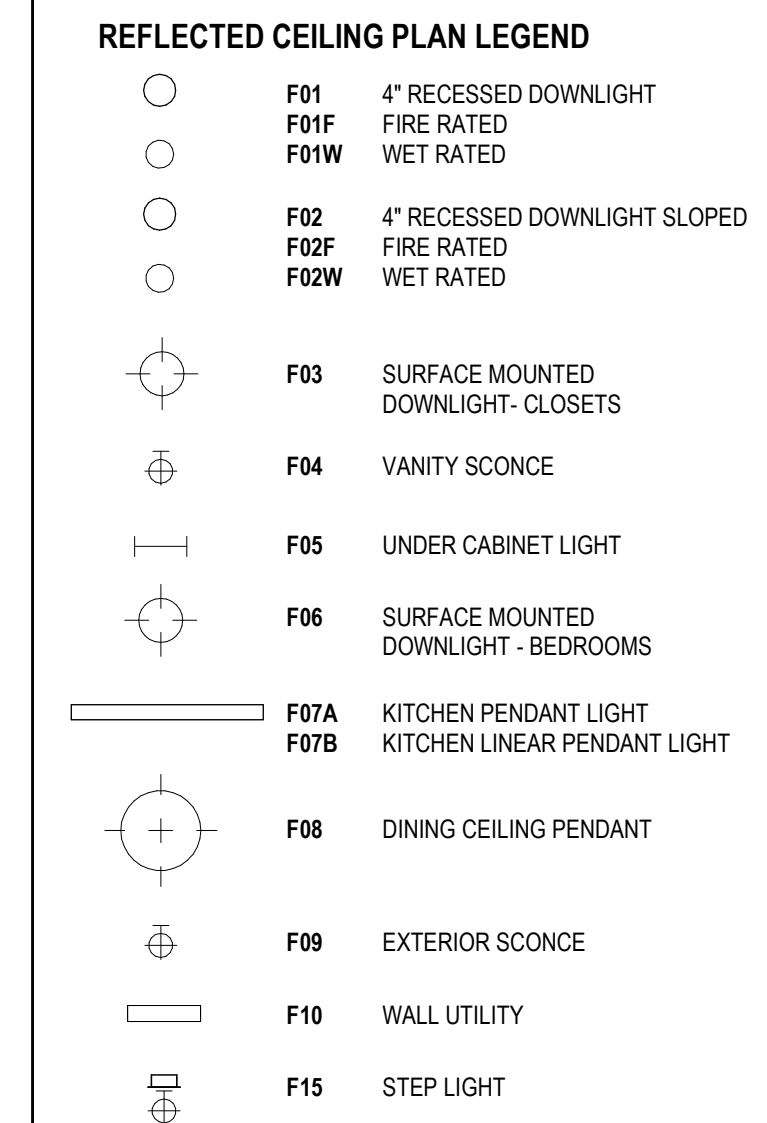
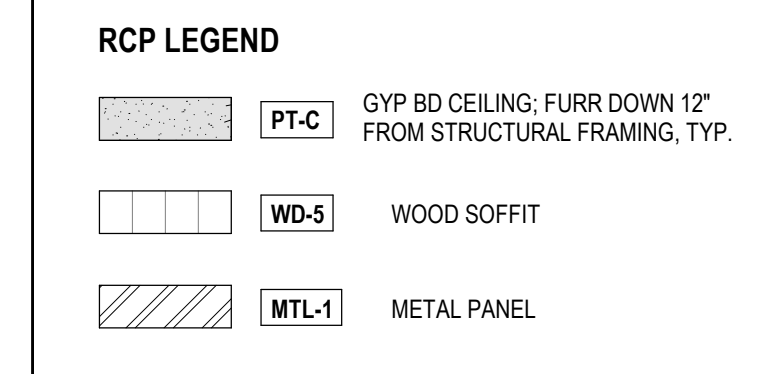
A152.1W

StoryBuilt holds all rights of copyright to these drawings. Any reproduction, alteration, modification, lease or incorporation into other documents may not occur without the prior written permission of StoryBuilt. © 2022 StoryBuilt, LLC



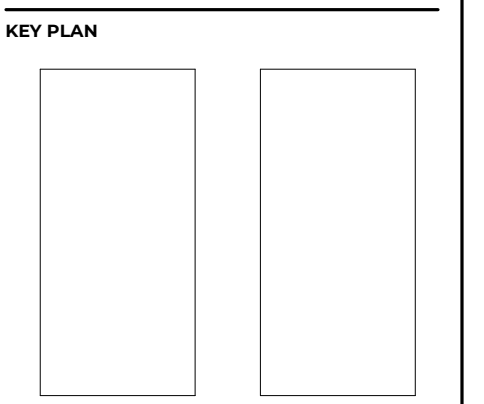
**UNIT REFLECTED CEILING PLAN
GENERAL NOTES**

- SEE SHEET G011EW FOR ALL MOUNTING HEIGHTS FOR ALL FINISH MATERIALS, TRIM, AND ELECTRICAL FIXTURES.
- REVIEW LIGHTING LAYOUT PRIOR TO FRAMING FLOOR AND CEILING JOISTS. WHERE LIGHTING CONFLICTS WITH FRAMING MEMBERS, REVIEW WITH ARCHITECT PRIOR TO MOVING FIXTURES.
- CENTER FIXTURES ON ROOMS & HALLWAYS UNLESS NOTED OTHERWISE.
- SEE SPEC APPENDICES FOR LIGHTING FIXTURE SCHEDULE.
- SEE SPEC APPENDIX E FOR FINISH MATERIALS.
- CEILING FINISH IS PAINTED GYP BOARD, U.N.O.
- CEILING HEIGHTS ARE DETERMINED BY BOTTOM OF STRUCTURAL FRAMING HEIGHT UNLESS OTHERWISE NOTED.
- REFER TO A500 SERIES FOR ELECTRICAL FIXTURE SCHEDULE.
- SEE A600 SHEETS FOR STEP LIGHT LOCATIONS.



RCP / ELECTRICAL LEGEND

	240VAC DEDICATED OUTLET
	240VAC DED. ELEC. VEHICLE CHARGING OUTLET @ 48'APF (50 AMP BREAKER)
	DUPLEX OUTLET
	DUPLEX OUTLET (TOP OUTLET SWITCHED)
	QUADPLEX OUTLET
	OUTLET W/ GROUND FAULT INTERRUPT
	WATERPROOF OUTLET W/ GFI
	OUTLET W/ (2) 5V USB PORTS
	120VAC OUTLET FOR APPLIANCE. SEE SPEC.
	FLOOR DUPLEX OUTLET
	FLOOR QUADPLEX OUTLET
	DIMMER WITH ON/OFF SWITCH
	SWITCH
	3-WAY SWITCH
	GARAGE DOOR OPENER SWITCH
	GARAGE DOOR LOW VOLTAGE SENSOR
	CRADLE FOR FAN REMOTE
	COMBO VOICE/DATA JACK
	DATA JACK
	VOICE JACK
	CEILING WAP DATA. ALIGN W/ ADJ. LIGHTING
	TELEVISION/CABLE JACK
	SMOKE DETECTOR
	CARBON MONOXIDE (CO) DETECTOR
	COMBO SMOKE/CO DETECTOR
	MOTION SENSOR
	THERMOSTAT
	CHIMES
	EXHAUST FAN
	RECESSED STRUCTURED MEDIA ENCLOSURE FOR HOME SECURITY & LOW-VOLTAGE
	MEDIA OUTLET



NOT FOR CONSTRUCTION

SDCI STAMP

ISSUES

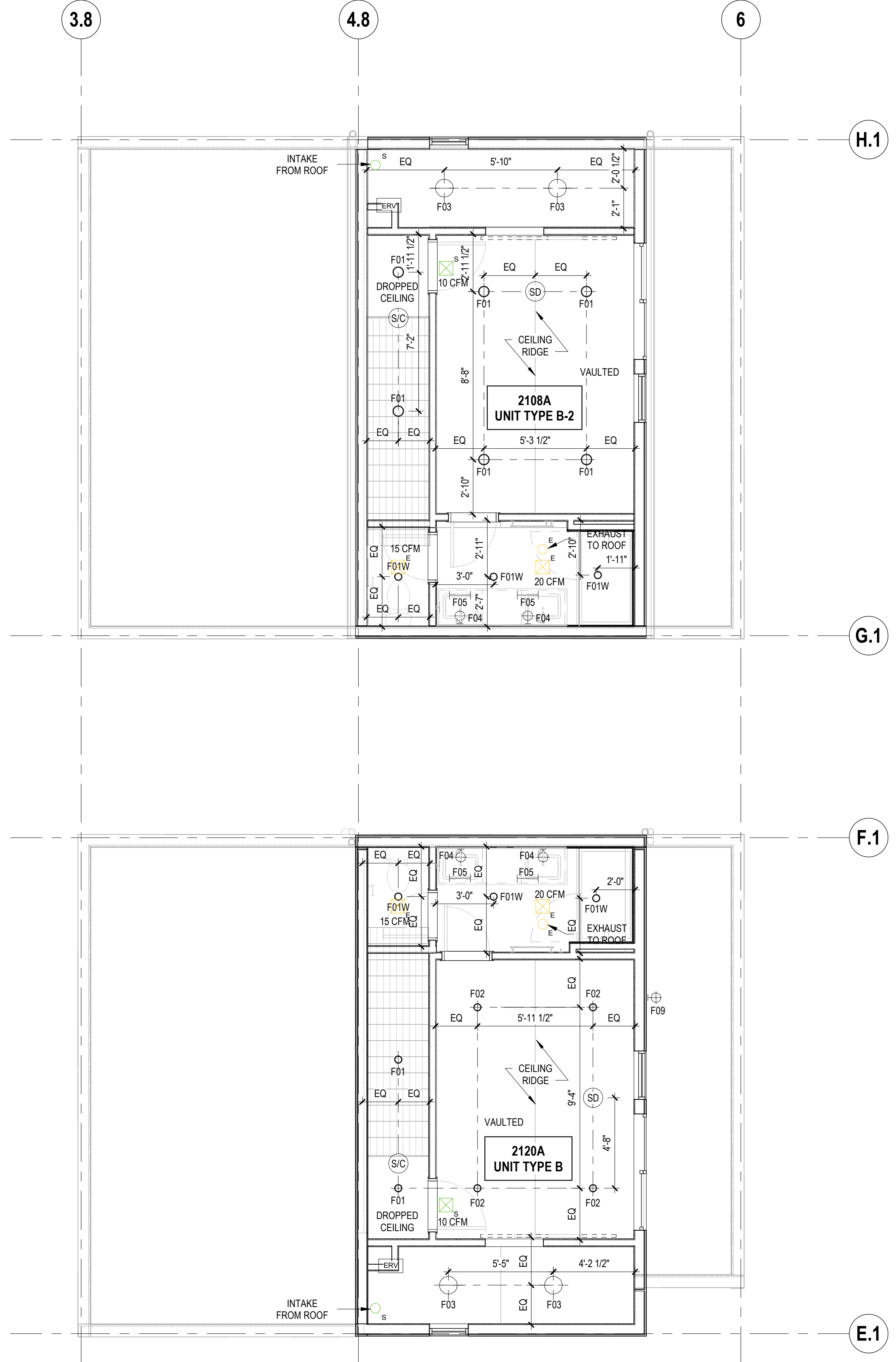
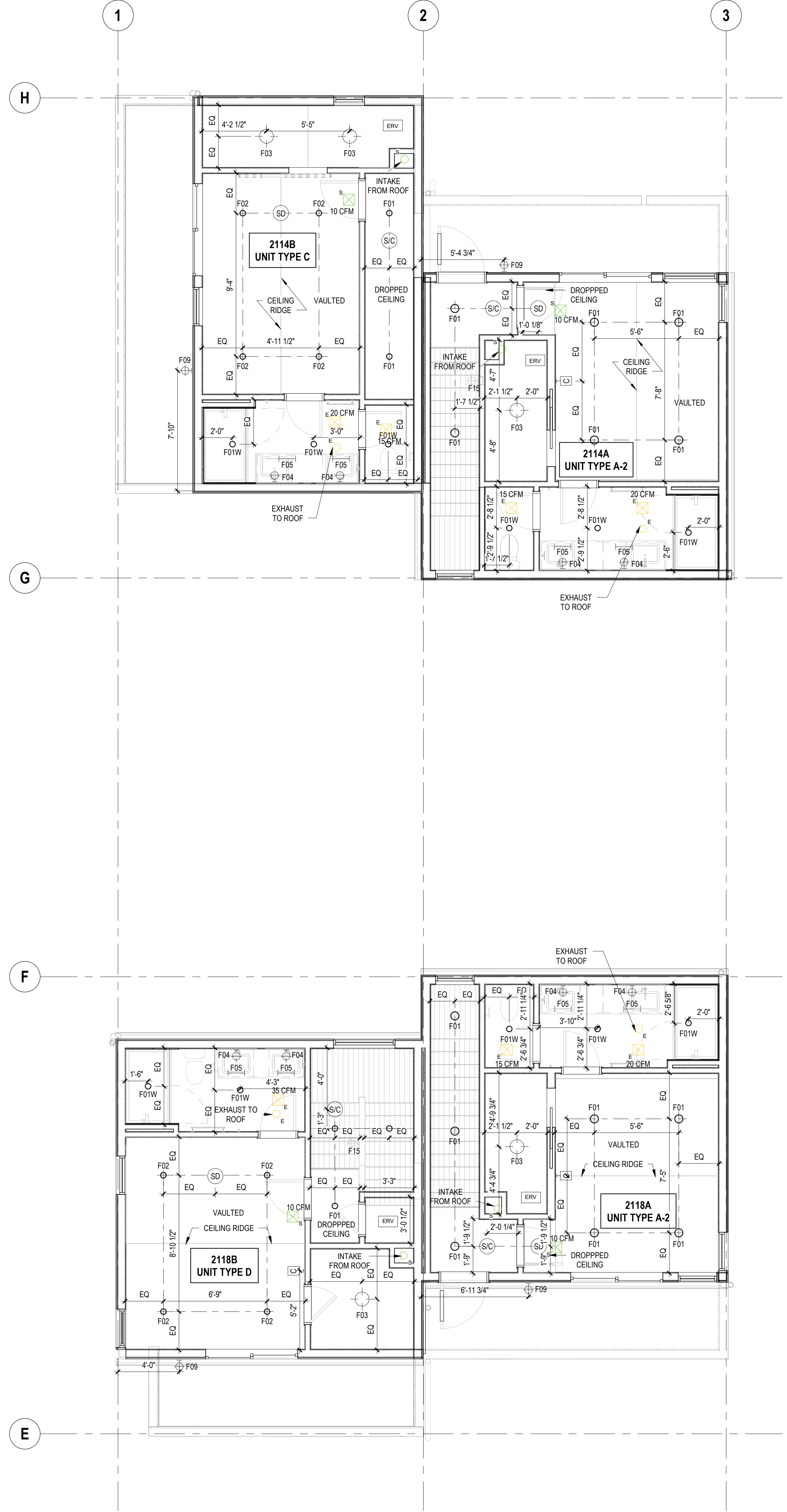
NO.	DESCRIPTION	DATE

SHEET INFORMATION

REFLECTED CEILING PLAN LEVEL 03 BLDGS 5-8

A152.2W

Storybuilt holds all rights of copyright to these drawings. Any reproduction, alteration, modification, reuse or incorporation into other documents may not occur without the prior written permission of Storybuilt.
© 2022 Storybuilt, LLC



MEP LEGEND

- EXHAUST AIR
- ERV OUTSIDE AIR INTAKE
- DRYER EXHAUST
- INTERMITTENT EXHAUST
- CONTINUOUS SUPPLY
- CONTINUOUS EXHAUST

*CFM NOTED ON PLAN

- UNIT REFLECTED CEILING PLAN**
GENERAL NOTES
- SEE SHEET G011EW FOR ALL MOUNTING HEIGHTS FOR ALL FINISH MATERIALS, TRIM, AND ELECTRICAL FIXTURES.
 - REVIEW LIGHTING LAYOUT PRIOR TO FRAMING FLOOR AND CEILING JOISTS. WHERE LIGHTING CONFLICTS WITH FRAMING MEMBERS, REVIEW WITH ARCHITECT PRIOR TO MOVING FIXTURES.
 - CENTER FIXTURES ON ROOMS & HALLWAYS UNLESS NOTED OTHERWISE.
 - SEE SPEC APPENDICES FOR LIGHTING FIXTURE SCHEDULE.
 - SEE SPEC APPENDIX E FOR FINISH MATERIALS.
 - CEILING FINISH IS PAINTED GYP BOARD, U.N.O.
 - CEILING HEIGHTS ARE DETERMINED BY BOTTOM OF STRUCTURAL FRAMING HEIGHT UNLESS OTHERWISE NOTED.
 - REFER TO A500 SERIES FOR ELECTRICAL FIXTURE SCHEDULE.
 - SEE A600 SHEETS FOR STEP LIGHT LOCATIONS.

RCP LEGEND

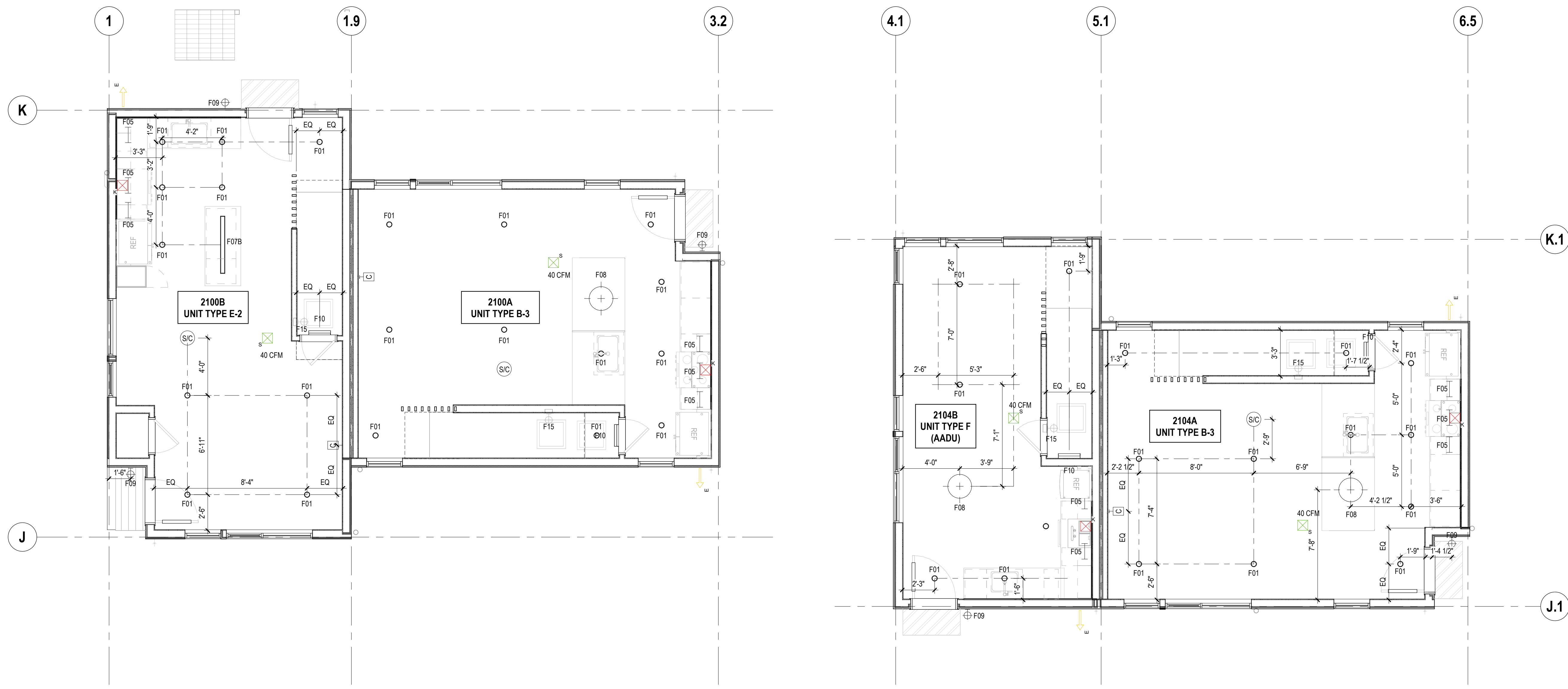
- PT-C GYP BD CEILING, FURR DOWN 12" FROM STRUCTURAL FRAMING, TYP.
- WD-5 WOOD SOFFIT
- MTL-1 METAL PANEL

REFLECTED CEILING PLAN LEGEND

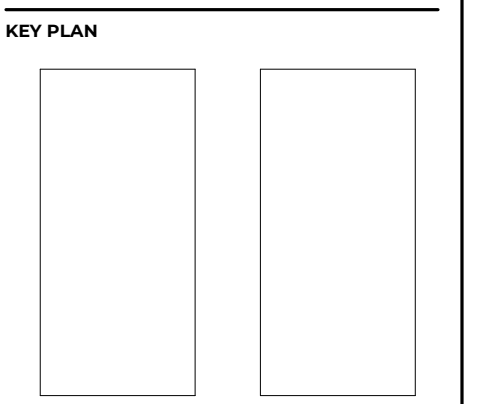
- F01 4" RECESSED DOWNLIGHT
- F01F FIRE RATED
- F01W WET RATED
- F02 4" RECESSED DOWNLIGHT SLOPED
- F02F FIRE RATED
- F02W WET RATED
- F03 SURFACE MOUNTED DOWNLIGHT- CLOSETS
- F04 VANITY SCONCE
- F05 UNDER CABINET LIGHT
- F06 SURFACE MOUNTED DOWNLIGHT - BEDROOMS
- F07A KITCHEN PENDANT LIGHT
- F07B KITCHEN LINEAR PENDANT LIGHT
- F08 DINING CEILING PENDANT
- F09 EXTERIOR SCONCE
- F10 WALL UTILITY
- F15 STEP LIGHT

RCP / ELECTRICAL LEGEND

	240VAC DEDICATED OUTLET
	240VAC DED. ELEC. VEHICLE CHARGING OUTLET @ 40AMP (50 AMP BREAKER)
	DUPLEX OUTLET
	DUPLEX OUTLET (TOP OUTLET SWITCHED)
	QUADPLEX OUTLET
	OUTLET W/ GROUND FAULT INTERRUPT
	WATERPROOF OUTLET W/ GFI
	OUTLET W/ (2) 5V USB PORTS
	120VAC OUTLET FOR APPLIANCE. SEE SPEC.
	FLOOR DUPLEX OUTLET
	FLOOR QUADPLEX OUTLET
	DIMMER WITH ON/OFF SWITCH
	SWITCH
	3-WAY SWITCH
	GARAGE DOOR OPENER SWITCH
	GARAGE DOOR LOW VOLTAGE SENSOR
	CRADLE FOR FAN REMOTE
	COMBO VOICE/DATA JACK
	DATA JACK
	VOICE JACK
	CEILING WAP DATA. ALIGN W/ ADJ. LIGHTING
	TELEVISION CABLE JACK
	SMOKE DETECTOR
	CARBON MONOXIDE (CO) DETECTOR
	COMBO SMOKE/CO DETECTOR
	MOTION SENSOR
	THERMOSTAT
	CHIMES
	EXHAUST FAN
	RECESSED STRUCTURED MEDIA ENCLOSURE FOR HOME SECURITY & LOW-VOLTAGE
	MEDIA OUTLET



1 BLDGS 9+10 - LEVEL 01 RCP
 1/4" = 1'-0" REF: 1/A500.0W



STAMP
 NOT FOR CONSTRUCTION

SDCI STAMP

ISSUES

NO.	DESCRIPTION	DATE
100% CD BID SET		06.30.2023

SHEET INFORMATION
REFLECTED CEILING PLAN LEVEL 01 BLDGS 9+10
A153.0W

Storybuilt holds all rights of copyright to these drawings. Any reproduction, alteration, modification, lease or incorporation into other documents may not occur without the prior written permission of Storybuilt.
 © 2022 Storybuilt, LLC

MEP LEGEND

- EXHAUST AIR
- ERV OUTSIDE AIR INTAKE
- DRYER EXHAUST
- INTERMITTENT EXHAUST
- CONTINUOUS SUPPLY
- CONTINUOUS EXHAUST

*CFM NOTED ON PLAN

- UNIT REFLECTED CEILING PLAN**
GENERAL NOTES
- SEE SHEET 0011EW FOR ALL MOUNTING HEIGHTS FOR ALL FINISH MATERIALS, TRIM, AND ELECTRICAL FIXTURES.
 - REVIEW LIGHTING LAYOUT PRIOR TO FRAMING FLOOR AND CEILING JOISTS. WHERE LIGHTING CONFLICTS WITH FRAMING MEMBERS, REVIEW WITH ARCHITECT PRIOR TO MOVING FIXTURES.
 - CENTER FIXTURES ON ROOMS & HALLWAYS UNLESS NOTED OTHERWISE.
 - SEE SPEC APPENDICES FOR LIGHTING FIXTURE SCHEDULE.
 - SEE SPEC APPENDIX E FOR FINISH MATERIALS.
 - CEILING FINISH IS PAINTED GYP BOARD, U.N.O
 - CEILING HEIGHTS ARE DETERMINED BY BOTTOM OF STRUCTURAL FRAMING HEIGHT UNLESS OTHERWISE NOTED.
 - REFER TO A500 SERIES FOR ELECTRICAL FIXTURE SCHEDULE.
 - SEE A600 SHEETS FOR STEP LIGHT LOCATIONS.

RCP LEGEND

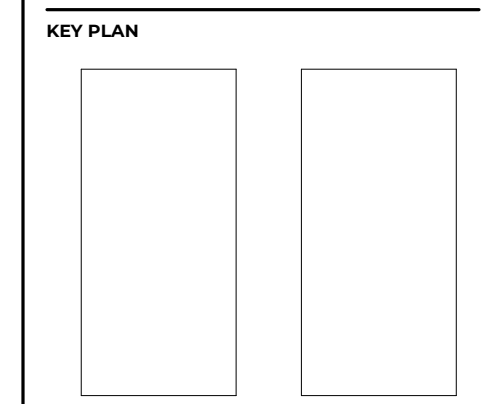
- PT-C GYP BD CEILING, FURR DOWN 12" FROM STRUCTURAL FRAMING, TYP.
- WD-5 WOOD SOFFIT
- MTL-1 METAL PANEL

REFLECTED CEILING PLAN LEGEND

- F01 4" RECESSED DOWNLIGHT
- F01F FIRE RATED
- F01W WET RATED
- F02 4" RECESSED DOWNLIGHT SLOPED
- F02F FIRE RATED
- F02W WET RATED
- F03 SURFACE MOUNTED DOWNLIGHT - CLOSETS
- F04 VANITY SCONCE
- F05 UNDER CABINET LIGHT
- F06 SURFACE MOUNTED DOWNLIGHT - BEDROOMS
- F07A KITCHEN PENDANT LIGHT
- F07B KITCHEN LINEAR PENDANT LIGHT
- F08 DINING CEILING PENDANT
- F09 EXTERIOR SCONCE
- F10 WALL UTILITY
- F15 STEP LIGHT

RCP / ELECTRICAL LEGEND

	240VAC DEDICATED OUTLET
	240VAC DED. ELEC. VEHICLE CHARGING OUTLET @ 40'APF (50 AMP BREAKER)
	DUPLEX OUTLET
	DUPLEX OUTLET (TOP OUTLET SWITCHED)
	QUADPLEX OUTLET
	OUTLET W/ GROUND FAULT INTERRUPT
	WATERPROOF OUTLET W/ GFI
	OUTLET W/ (2) 5V USB PORTS
	120VAC OUTLET FOR APPLIANCE. SEE SPEC.
	FLOOR DUPLICATE OUTLET
	FLOOR QUADPLEX OUTLET
	DIMMER WITH ON/OFF SWITCH
	SWITCH
	3-WAY SWITCH
	GARAGE DOOR OPENER SWITCH
	GARAGE DOOR LOW VOLTAGE SENSOR
	CRADLE FOR FAN REMOTE
	COMBO VOICE/DATA JACK
	DATA JACK
	VOICE JACK
	CEILING WAP DATA. ALIGN W/ ADJ. LIGHTING
	TELEVISION CABLE JACK
	SMOKE DETECTOR
	CARBON MONOXIDE (CO) DETECTOR
	COMBO SMOKE/CO DETECTOR
	MOTION SENSOR
	THERMOSTAT
	CHIMES
	EXHAUST FAN
	RECESSED STRUCTURED MEDIA ENCLOSURE FOR HOME SECURITY & LOW-VOLTAGE
	MEDIA OUTLET



STAMP
NOT FOR CONSTRUCTION

SDCI STAMP

ISSUES

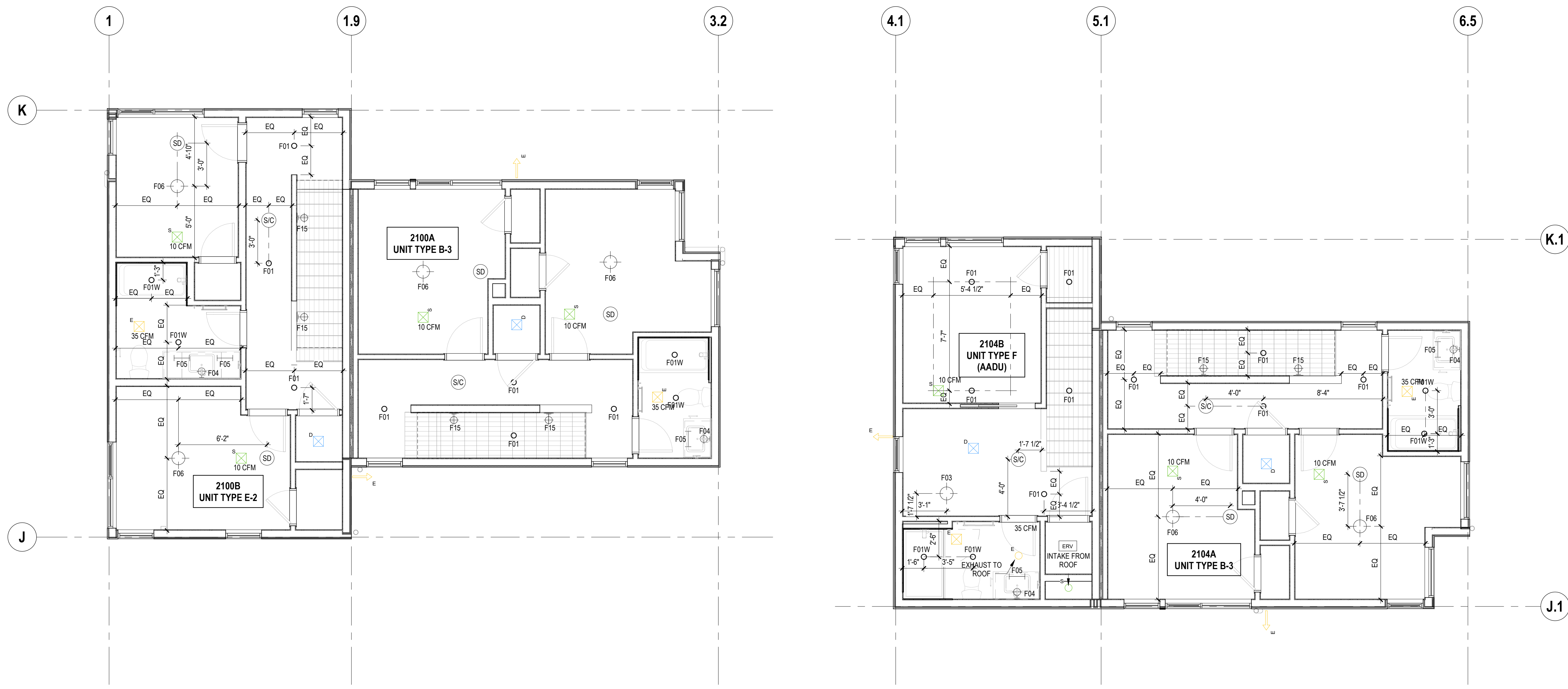
NO.	DESCRIPTION	DATE

SHEET INFORMATION

REFLECTED CEILING PLAN LEVEL 02 BLDGS 9+10

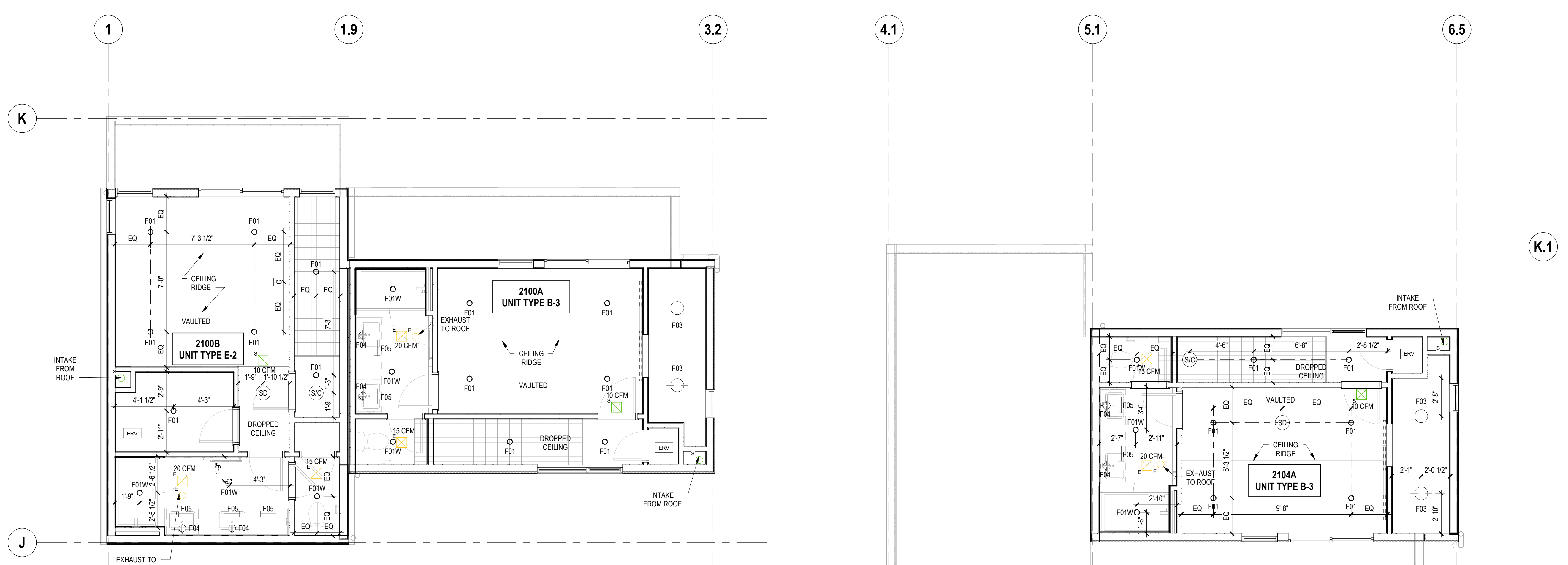
A153.1W

Storybuilt holds all rights of copyright to these drawings. Any reproductions, alterations, modifications, usage or incorporation into other documents may not occur without the prior written permission of Storybuilt.
© 2022 Storybuilt, LLC



- MEP LEGEND**
- EXHAUST AIR
 - ERV OUTSIDE AIR INTAKE
 - DRYER EXHAUST
 - INTERMITTENT EXHAUST
 - CONTINUOUS SUPPLY
 - CONTINUOUS EXHAUST
 - *CFM NOTED ON PLAN

- UNIT REFLECTED CEILING PLAN
GENERAL NOTES**
- SEE SHEET G011EW FOR ALL MOUNTING HEIGHTS FOR ALL FINISH MATERIALS, TRIM, AND ELECTRICAL FIXTURES.
 - REVIEW LIGHTING LAYOUT PRIOR TO FRAMING FLOOR AND CEILING JOISTS. WHERE LIGHTING CONFLICTS WITH FRAMING MEMBERS, REVIEW WITH ARCHITECT PRIOR TO MOVING FIXTURES.
 - CENTER FIXTURES ON ROOMS & HALLWAYS UNLESS NOTED OTHERWISE.
 - SEE SPEC APPENDICES FOR LIGHTING FIXTURE SCHEDULE.
 - SEE SPEC APPENDIX E FOR FINISH MATERIALS.
 - CEILING FINISH IS PAINTED GYP BOARD, U.N.O.
 - CEILING HEIGHTS ARE DETERMINED BY BOTTOM OF STRUCTURAL FRAMING HEIGHT UNLESS OTHERWISE NOTED.
 - REFER TO A900 SERIES FOR ELECTRICAL FIXTURE SCHEDULE.
 - SEE A600 SHEETS FOR STEP LIGHT LOCATIONS.
- RCP LEGEND**
- PT-C** GYP BD CEILING, FURR DOWN 12" FROM STRUCTURAL FRAMING, TYP.
 - WD-5** WOOD SOFFIT
 - MTL-1** METAL PANEL
- REFLECTED CEILING PLAN LEGEND**
- F01** 4" RECESSED DOWNLIGHT
 - F01F** FIRE RATED
 - F01W** WET RATED
 - F02** 4" RECESSED DOWNLIGHT SLOPED
 - F02F** FIRE RATED
 - F02W** WET RATED
 - F03** SURFACE MOUNTED DOWNLIGHT - CLOSETS
 - F04** VANITY SCOURCE
 - F05** UNDER CABINET LIGHT
 - F06** SURFACE MOUNTED DOWNLIGHT - BEDROOMS
 - F07A** KITCHEN PENDANT LIGHT
 - F07B** KITCHEN LINEAR PENDANT LIGHT
 - F08** DINING CEILING PENDANT
 - F09** EXTERIOR SCOURCE
 - F10** WALL UTILITY
 - F15** STEP LIGHT



RCP / ELECTRICAL LEGEND

	240VAC DEDICATED OUTLET
	240VAC DED. ELEC. VEHICLE CHARGING OUTLET @ 42'APF (50 AMP BREAKER)
	DUPLEX OUTLET
	DUPLEX OUTLET (TOP OUTLET SWITCHED)
	QUADPLEX OUTLET
	OUTLET W/ GROUND FAULT INTERRUPT
	WATERPROOF OUTLET W/ GFI
	OUTLET W/ (2) 5V USB PORTS
	120VAC OUTLET FOR APPLIANCE. SEE SPEC.
	FLOOR DUPLEX OUTLET
	FLOOR QUADPLEX OUTLET
	DIMMER WITH ON/OFF SWITCH
	SWITCH
	3-WAY SWITCH
	GARAGE DOOR OPENER SWITCH
	GARAGE DOOR LOW VOLTAGE SENSOR
	CRADLE FOR FAN REMOTE
	COMBO VOICE/DATA JACK
	DATA JACK
	VOICE JACK
	CEILING W/AP DATA, ALIGN W/ ADJ. LIGHTING
	SMOKE DETECTOR
	CARBON MONOXIDE (CO) DETECTOR
	COMBO SMOKE/CO DETECTOR
	MOTION SENSOR
	THERMOSTAT
	CHIMES
	EXHAUST FAN
	RECESSED STRUCTURED MEDIA ENCLOSURE FOR HOME SECURITY & LOW-VOLTAGE
	MEDIA OUTLET

KEY PLAN

STAMP
NOT FOR CONSTRUCTION

SD/SI STAMP

ISSUES

NO.	DESCRIPTION	DATE
100% CD BID SET		06.20.2023

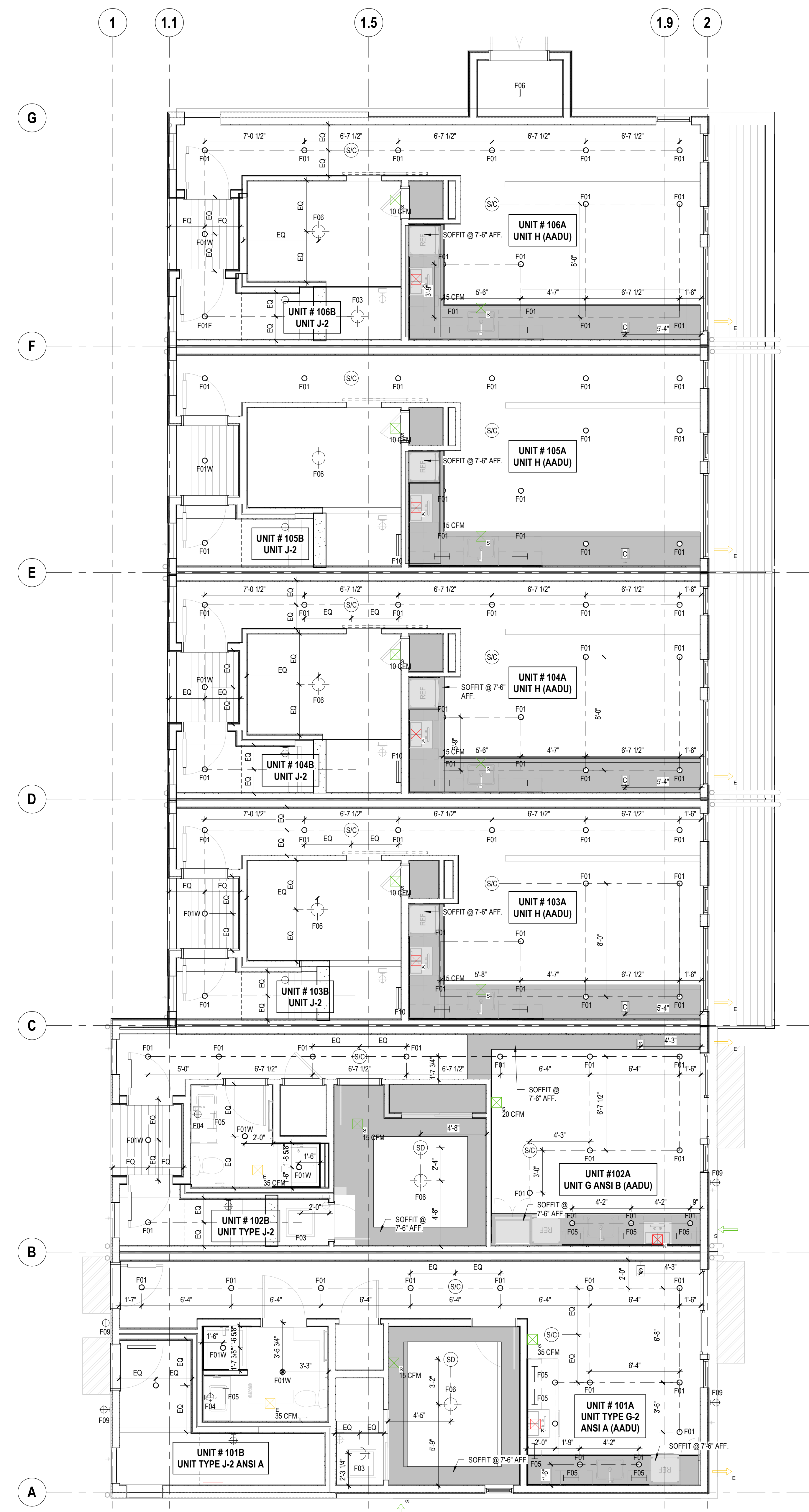
SHEET INFORMATION

REFLECTED CEILING PLAN LEVEL 03 BLDGS 9-10

A153.2W

Storybuilt holds all rights of copyright to these drawings. Any reproductions, alterations, modifications, usage or incorporation into other documents may not occur without the prior written permission of Storybuilt.
© 2022 Storybuilt, LLC

1 BLDGS 9-10 - LEVEL 03 RCP
1/4" = 1'-0" REF: 1/A500.0W



- MEP LEGEND**
- EXHAUST AIR
 - ERV OUTSIDE AIR INTAKE
 - DRYER EXHAUST
 - INTERMITTENT EXHAUST
 - CONTINUOUS SUPPLY
 - CONTINUOUS EXHAUST
- *CFM NOTED ON PLAN

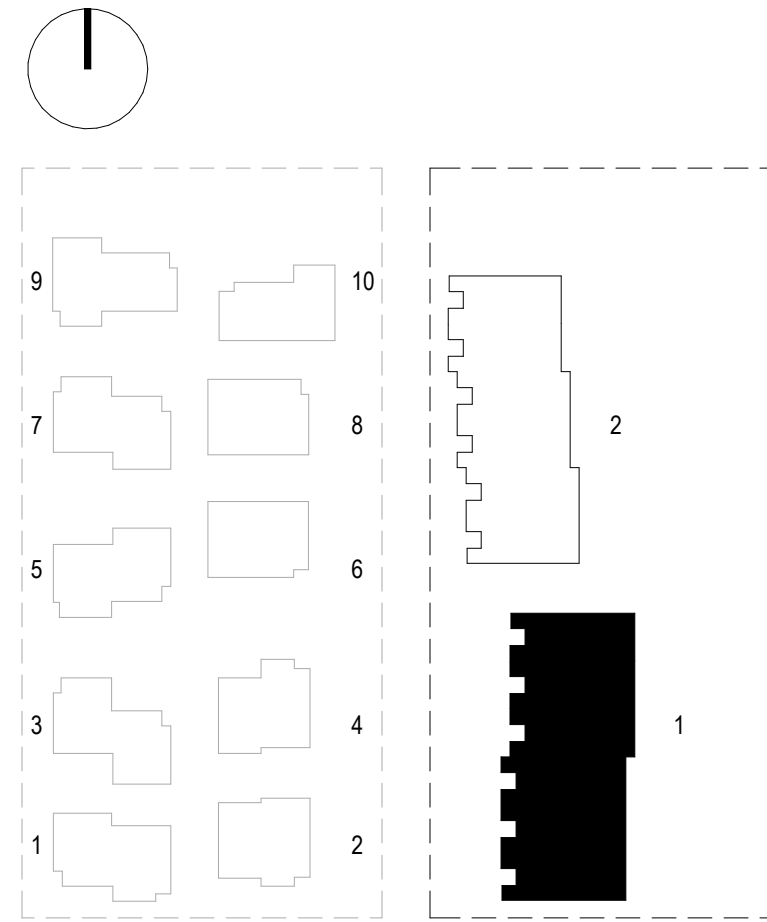
- UNIT REFLECTED CEILING PLAN GENERAL NOTES**
1. SEE SHEET G011EW FOR ALL MOUNTING HEIGHTS FOR ALL FINISH MATERIALS, TRIM, AND ELECTRICAL FIXTURES.
 2. REVIEW LIGHTING LAYOUT PRIOR TO FRAMING FLOOR AND CEILING JOISTS. WHERE LIGHTING CONFLICTS WITH FRAMING MEMBERS, REVIEW WITH ARCHITECT PRIOR TO MOVING FIXTURES.
 3. CENTER FIXTURES ON ROOMS & HALLWAYS UNLESS NOTED OTHERWISE.
 4. SEE SPEC APPENDICES FOR LIGHTING FIXTURE SCHEDULE.
 5. SEE SPEC APPENDIX E FOR FINISH MATERIALS.
 6. CEILING FINISH IS PAINTED GYP BOARD, U.O.
 7. CEILING HEIGHTS ARE DETERMINED BY BOTTOM OF STRUCTURAL FRAMING HEIGHT UNLESS OTHERWISE NOTED.
 8. REFER TO A500 SERIES FOR ELECTRICAL FIXTURE SCHEDULE.
 9. SEE A600 SHEETS FOR STEP LIGHT LOCATIONS.

- RCP LEGEND**
- PT-C GYP BD CEILING, FURR DOWN 12\"/> FROM STRUCTURAL FRAMING, TYP.
 - WD-5 WOOD SOFFIT
 - MTL-1 METAL PANEL

- REFLECTED CEILING PLAN LEGEND**
- F01 4\"/> RECESSED DOWNLIGHT
 - F01F FIRE RATED
 - F01W WET RATED
 - F02 4\"/> RECESSED DOWNLIGHT SLOPED
 - F02F FIRE RATED
 - F02W WET RATED
 - F03 SURFACE MOUNTED DOWNLIGHT- CLOSETS
 - F04 VANITY SCONCE
 - F05 UNDER CABINET LIGHT
 - F06 SURFACE MOUNTED DOWNLIGHT- BEDROOMS
 - F07A KITCHEN PENDANT LIGHT
 - F07B KITCHEN LINEAR PENDANT LIGHT
 - F08 DINING CEILING PENDANT
 - F09 EXTERIOR SCONCE
 - F10 WALL UTILITY
 - F15 STEP LIGHT

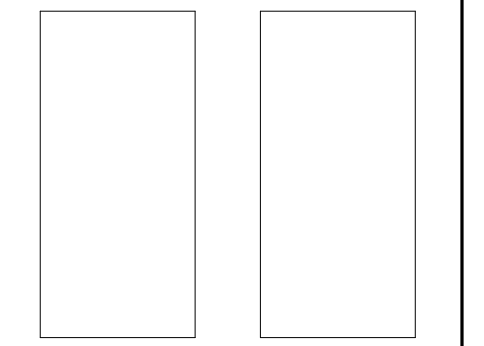
RCP / ELECTRICAL LEGEND

	249VAC DEDICATED OUTLET
	240VAC DED. ELEC. VEHICLE CHARGING OUTLET @ 48\"/> AFF (50 AMP BREAKER)
	DUPLEX OUTLET
	DUPLEX OUTLET (TOP OUTLET SWITCHED)
	QUADPLEX OUTLET
	OUTLET W/ GROUND FAULT INTERRUPT
	WATERPROOF OUTLET W/ GFI
	OUTLET W/ (2) 5V USB PORTS
	120VAC OUTLET FOR APPLIANCE. SEE SPEC.
	FLOOR DUPLEX OUTLET
	FLOOR QUADPLEX OUTLET
	DIMMER WITH ON/OFF SWITCH
	SWITCH
	3-WAY SWITCH
	GARAGE DOOR OPENER SWITCH
	GARAGE DOOR LOW VOLTAGE SENSOR
	CRADLE FOR FAN REMOTE
	COMBO VOICE/DATA JACK
	VOICE JACK
	CEILING WAP DATA. ALIGN W/ ADJ. LIGHTING
	TELEVISION CABLE JACK
	SMOKE DETECTOR
	CARBON MONOXIDE (CO) DETECTOR
	COMBO SMOKE/CO DETECTOR
	MOTION SENSOR
	THERMOSTAT
	CHIMES
	EXHAUST FAN
	RECESSED STRUCTURED MEDIA ENCLOSURE FOR HOME SECURITY & LOW-VOLTAGE
	MEDIA OUTLET



1 EAST BLDG 1 - LEVEL 01 RCP
1/4\"/> = 1'-0\"/>
REF: 1B/A600E

KEY PLAN



STAMP
NOT FOR CONSTRUCTION

SDCI STAMP

ISSUES

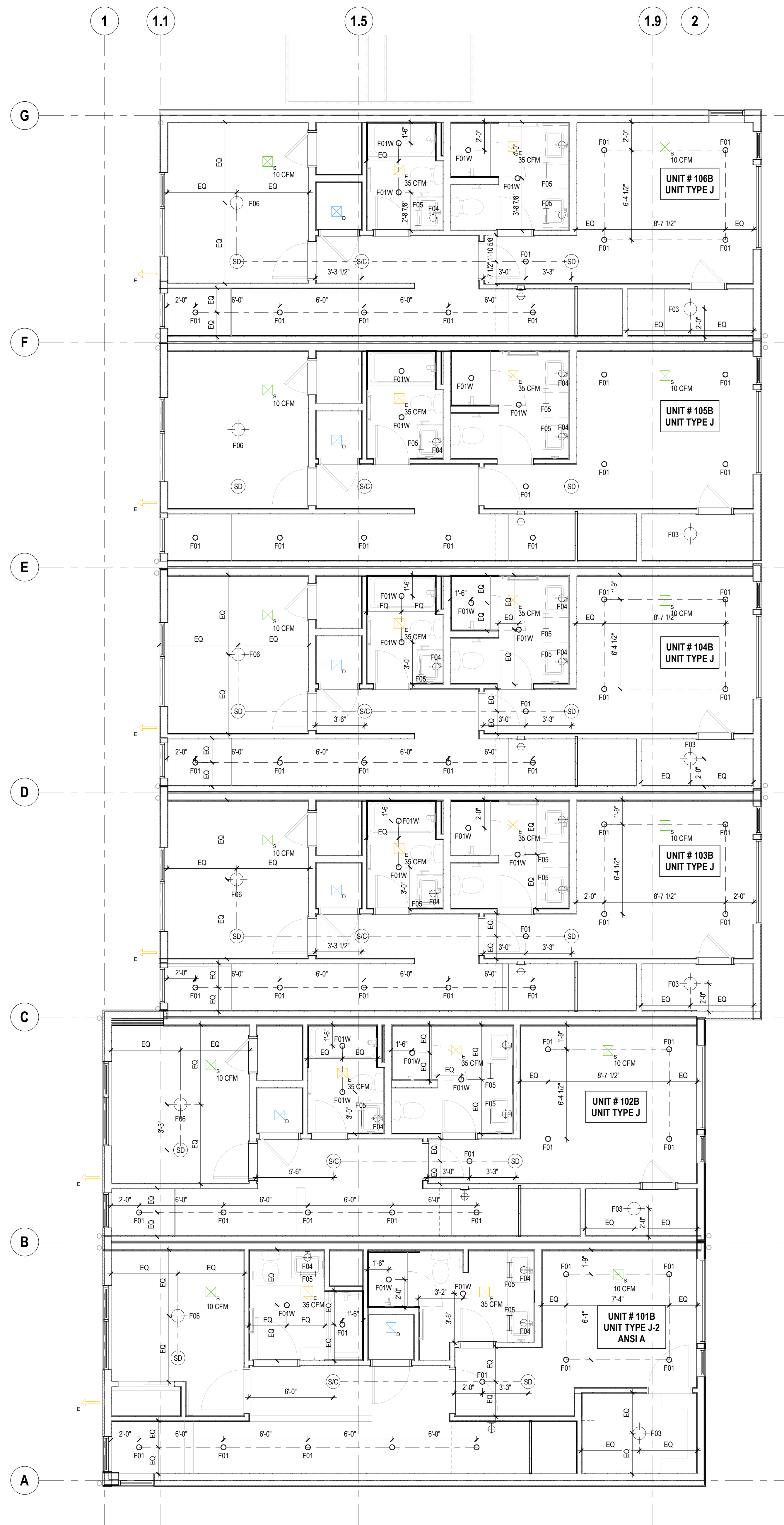
NO.	DATE	DESCRIPTION
100% CD BID SET	06.30.2023	

SHEET INFORMATION

REFLECTED CEILING PLAN LEVEL 01 EAST BLDG 1

A154.1E

Storybuilt holds all rights of copyright to these drawings. Any reproduction, alteration, modification, lease or incorporation into other documents may not occur without the prior written permission of Storybuilt.
© 2022 Storybuilt, LLC



MEP LEGEND

- EXHAUST AIR
- ERV OUTSIDE AIR INTAKE
- DRYER EXHAUST
- INTERMITTENT EXHAUST
- CONTINUOUS SUPPLY
- CONTINUOUS EXHAUST

*CFM NOTED ON PLAN

- UNIT REFLECTED CEILING PLAN GENERAL NOTES**
- SEE SHEET G011EW FOR ALL MOUNTING HEIGHTS FOR ALL FINISH MATERIALS, TRIM, AND ELECTRICAL FIXTURES.
 - REVIEW LIGHTING LAYOUT PRIOR TO FRAMING FLOOR AND CEILING JOISTS. WHERE LIGHTING CONFLICTS WITH FRAMING MEMBERS, REVIEW WITH ARCHITECT PRIOR TO MOVING FIXTURES.
 - CENTER FIXTURES ON ROOMS & HALLWAYS UNLESS NOTED OTHERWISE.
 - SEE SPEC APPENDICES FOR LIGHTING FIXTURE SCHEDULE.
 - SEE SPEC APPENDIX E FOR FINISH MATERIALS.
 - CEILING FINISH IS PAINTED GYP BOARD, U.N.O.
 - CEILING HEIGHTS ARE DETERMINED BY BOTTOM OF STRUCTURAL FRAMING HEIGHT UNLESS OTHERWISE NOTED.
 - REFER TO A500 SERIES FOR ELECTRICAL FIXTURE SCHEDULE.
 - SEE A600 SHEETS FOR STEP LIGHT LOCATIONS.

RCP LEGEND

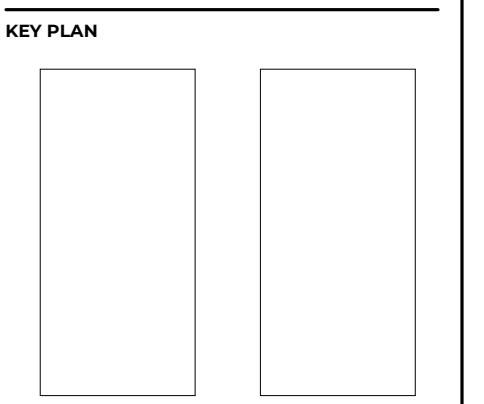
- PT-C GYP BD CEILING, FURR DOWN 12" FROM STRUCTURAL FRAMING, TYP.
- WD-5 WOOD SOFFIT
- MTL-1 METAL PANEL

REFLECTED CEILING PLAN LEGEND

- F01 4" RECESSED DOWNLIGHT
- F01F FIRE RATED
- F01W WET RATED
- F02 4" RECESSED DOWNLIGHT SLOPED
- F02F FIRE RATED
- F02W WET RATED
- F03 SURFACE MOUNTED DOWNLIGHT- CLOSETS
- F04 VANITY SCIENCE
- F05 UNDER CABINET LIGHT
- F06 SURFACE MOUNTED DOWNLIGHT - BEDROOMS
- F07A KITCHEN PENDANT LIGHT
- F07B KITCHEN LINEAR PENDANT LIGHT
- F08 DINING CEILING PENDANT
- F09 EXTERIOR SCIENCE
- F10 WALL UTILITY
- F15 STEP LIGHT

RCP / ELECTRICAL LEGEND

	240VAC DEDICATED OUTLET
	240VAC DED. ELEC. VEHICLE CHARGING OUTLET @ 40'AMP (50 AMP BREAKER)
	DUPLEX OUTLET
	DUPLEX OUTLET (TOP OUTLET SWITCHED)
	QUADPLEX OUTLET
	OUTLET W/ GROUND FAULT INTERRUPT
	WATERPROOF OUTLET W/ GFI
	OUTLET W/ (2) 5V USB PORTS
	120VAC OUTLET FOR APPLIANCE. SEE SPEC.
	FLOOR DUPLEX OUTLET
	FLOOR QUADPLEX OUTLET
	DIMMER WITH ON/OFF SWITCH
	SWITCH
	3-WAY SWITCH
	GARAGE DOOR OPENER SWITCH
	GARAGE DOOR LOW VOLTAGE SENSOR
	CRADLE FOR FAN REMOTE
	COMBO VOICE/DATA JACK
	DATA JACK
	VOICE JACK
	CEILING WAP DATA. ALIGN W/ ADJ. LIGHTING
	TELEVISION CABLE JACK
	SMOKE DETECTOR
	CARBON MONOXIDE (CO) DETECTOR
	COMBO SMOKE/CO DETECTOR
	MOTION SENSOR
	THERMOSTAT
	CHIMES
	EXHAUST FAN
	RECESSED STRUCTURED MEDIA ENCLOSURE FOR HOME SECURITY & LOW-VOLTAGE
	MEDIA OUTLET



STAMP
NOT FOR CONSTRUCTION

SDCI STAMP

ISSUES

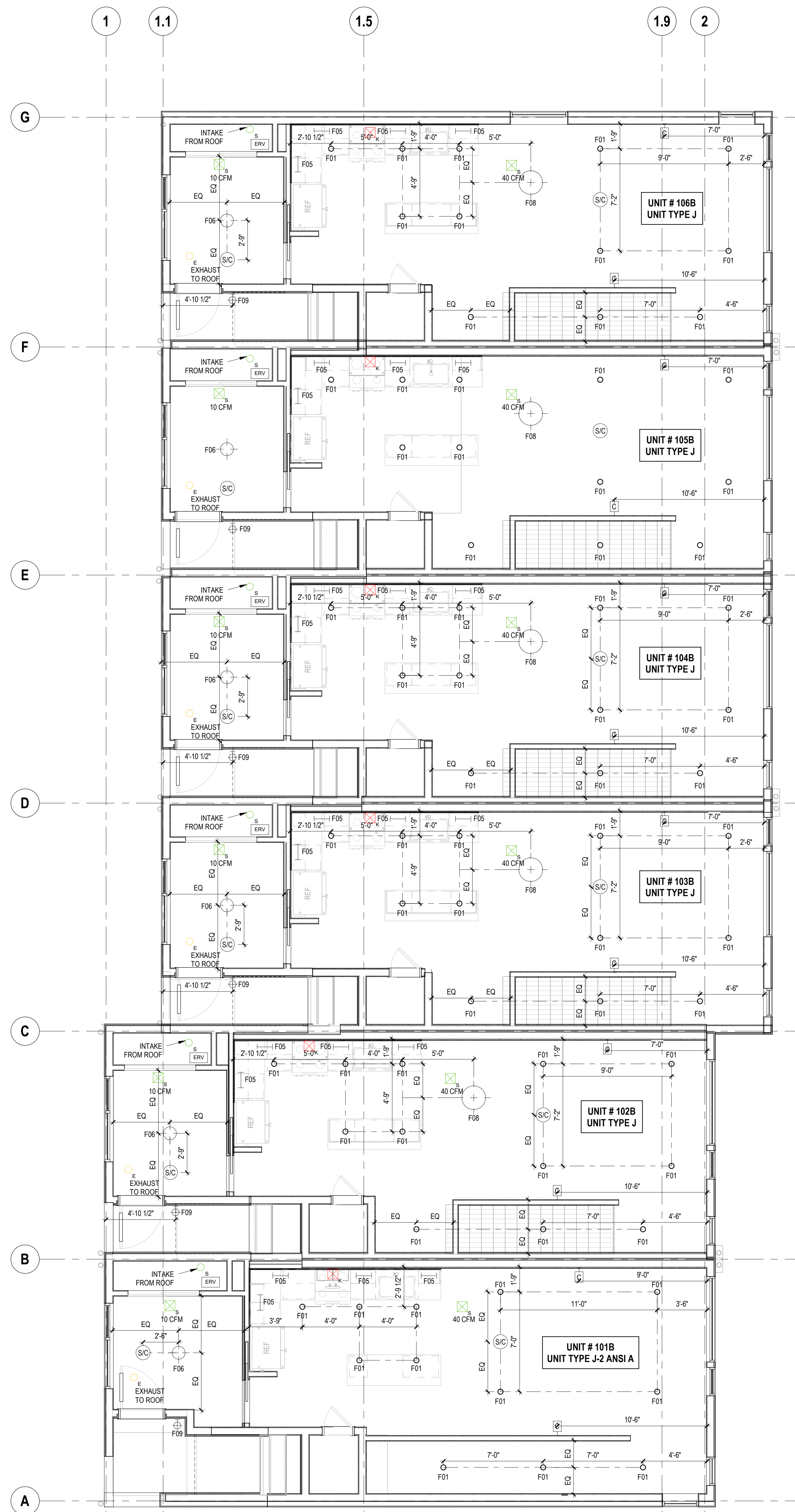
NO.	DESCRIPTION	DATE
100% CD BID SET		06.30.2023

SHEET INFORMATION

REFLECTED CEILING PLAN LEVEL 02 EAST BLDG 1

A154.2E

Storybuilt holds all rights of copyright to these drawings. Any reproduction, alteration, modification, usage or incorporation into other documents may not occur without the prior written permission of Storybuilt.
© 2022 Storybuilt, LLC



MEP LEGEND

- EXHAUST AIR
- ERV OUTSIDE AIR INTAKE
- DRYER EXHAUST
- INTERMITTENT EXHAUST
- CONTINUOUS SUPPLY
- CONTINUOUS EXHAUST

*CFM NOTED ON PLAN

UNIT REFLECTED CEILING PLAN GENERAL NOTES

- SEE SHEET G011EW FOR ALL MOUNTING HEIGHTS FOR ALL FINISH MATERIALS, TRIM, AND ELECTRICAL FIXTURES.
- REVIEW LIGHTING LAYOUT PRIOR TO FRAMING FLOOR AND CEILING JOISTS. WHERE LIGHTING CONFLICTS WITH FRAMING MEMBERS, REVIEW WITH ARCHITECT PRIOR TO MOVING FIXTURES.
- CENTER FIXTURES ON ROOMS & HALLWAYS UNLESS NOTED OTHERWISE.
- SEE SPEC APPENDICES FOR LIGHTING FIXTURE SCHEDULE.
- SEE SPEC APPENDIX E FOR FINISH MATERIALS.
- CEILING FINISH IS PAINTED GYP BOARD, U.N.O.
- CEILING HEIGHTS ARE DETERMINED BY BOTTOM OF STRUCTURAL FRAMING HEIGHT UNLESS OTHERWISE NOTED.
- REFER TO A500 SERIES FOR ELECTRICAL FIXTURE SCHEDULE.
- SEE A600 SHEETS FOR STEP LIGHT LOCATIONS.

RCP LEGEND

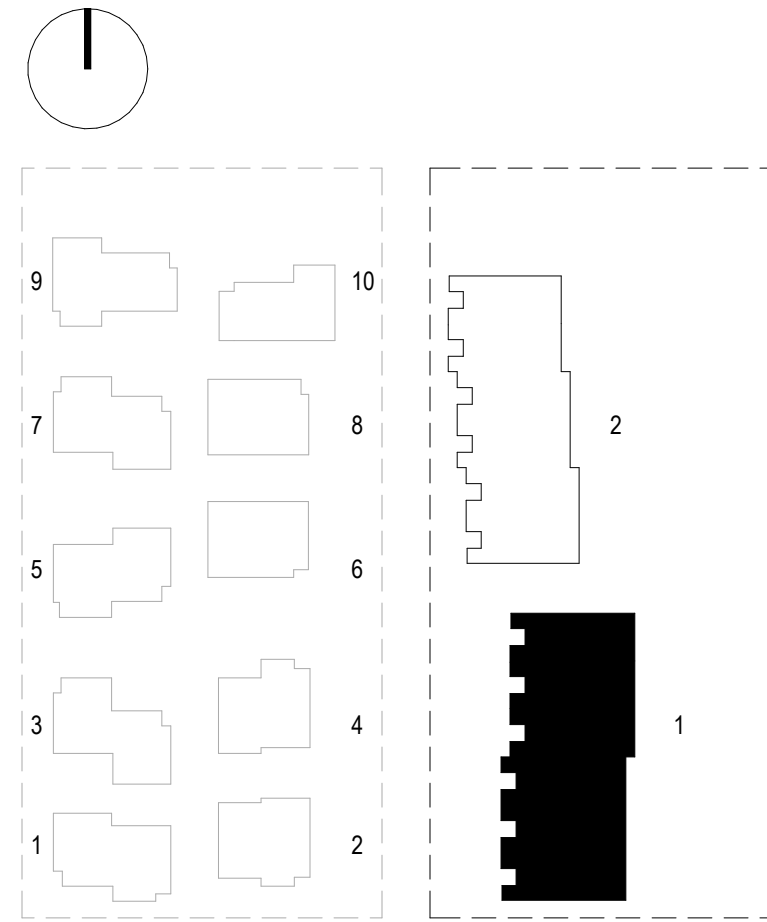
- PT-C GYP BD CEILING, FURR DOWN 12" FROM STRUCTURAL FRAMING, TYP.
- WB-5 WOOD SOFFIT
- MTL-1 METAL PANEL

REFLECTED CEILING PLAN LEGEND

- F01 4" RECESSED DOWNLIGHT
- F01F FIRE RATED
- F01W WET RATED
- F02 4" RECESSED DOWNLIGHT SLOPED
- F02F FIRE RATED
- F02W WET RATED
- F03 SURFACE MOUNTED DOWNLIGHT - CLOSETS
- F04 VANITY SCIENCE
- F05 UNDER CABINET LIGHT
- F06 SURFACE MOUNTED DOWNLIGHT - BEDROOMS
- F07A KITCHEN PENDANT LIGHT
- F07B KITCHEN LINEAR PENDANT LIGHT
- F08 DINING CEILING PENDANT
- F09 EXTERIOR SCIENCE
- F10 WALL UTILITY
- F15 STEP LIGHT

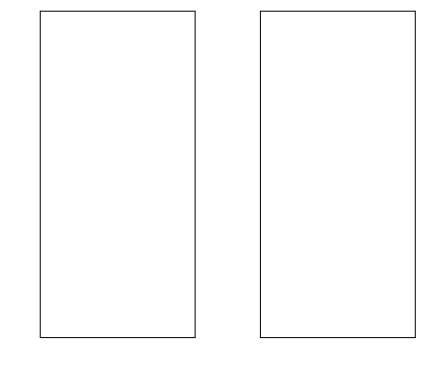
RCP / ELECTRICAL LEGEND

	240VAC DEDICATED OUTLET
	240VAC DED. ELEC. VEHICLE CHARGING OUTLET @ 40'APP (50 AMP BREAKER)
	DUPLEX OUTLET
	DUPLEX OUTLET (TOP OUTLET SWITCHED)
	QUADPLEX OUTLET
	OUTLET W/ GROUND FAULT INTERRUPT
	WATERPROOF OUTLET W/ GFI
	OUTLET W/ (2) 5V USB PORTS
	120VAC OUTLET FOR APPLIANCE. SEE SPEC.
	FLOOR DUPLEX OUTLET
	FLOOR QUADPLEX OUTLET
	DIMMER WITH ON/OFF SWITCH
	SWITCH
	3-WAY SWITCH
	GARAGE DOOR OPENER SWITCH
	GARAGE DOOR LOW VOLTAGE SENSOR
	CRADLE FOR FAN REMOTE
	COMBO VOICE/DATA JACK
	VOICE JACK
	CEILING WAP DATA. ALIGN W/ ADJ. LIGHTING
	TELEVISION CABLE JACK
	SMOKE DETECTOR
	CARBON MONOXIDE (CO) DETECTOR
	COMBO SMOKE/CO DETECTOR
	MOTION SENSOR
	THERMOSTAT
	CHIMES
	EXHAUST FAN
	RECESSED STRUCTURED MEDIA ENCLOSURE FOR HOME SECURITY & LOW-VOLTAGE
	MEDIA OUTLET



1 EAST BLDG 1 - LEVEL 03 RCP
1/4" = 1'-0" REF: 2C/A600E

KEY PLAN



STAMP

NOT FOR CONSTRUCTION

SDCI STAMP

ISSUES

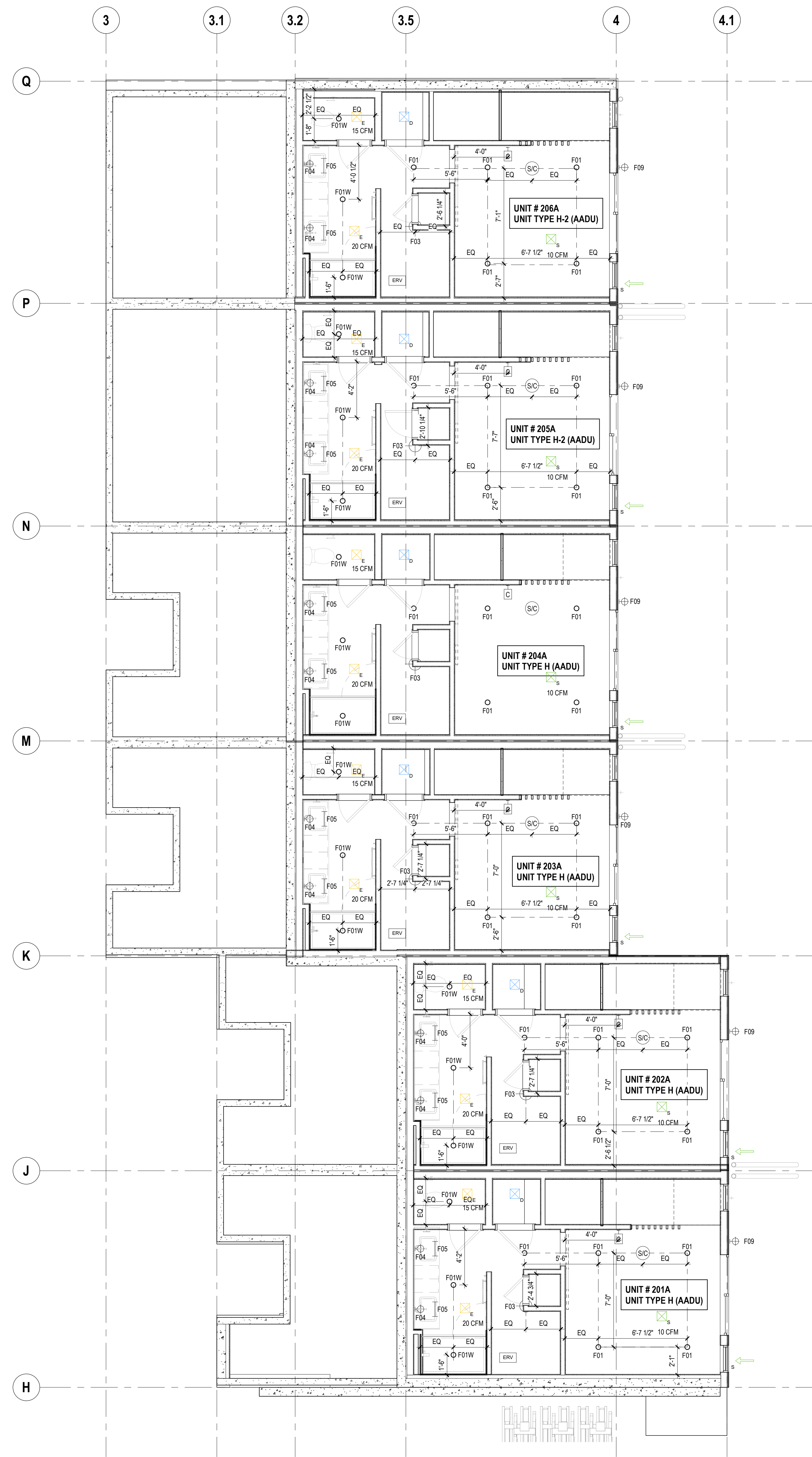
NO.	DESCRIPTION	DATE
100% CD BID SET		06.30.2023

SHEET INFORMATION

REFLECTED CEILING PLAN LEVEL 03 EAST BLDG 1

A154.3E

Storybuilt holds all rights of copyright to these drawings. Any reproduction, alteration, modification, usage or incorporation into other documents may not occur without the prior written permission of Storybuilt.
© 2022 Storybuilt, LLC



MEP LEGEND

- EXHAUST AIR
- ERV OUTSIDE AIR INTAKE
- DRYER EXHAUST
- INTERMITTENT EXHAUST
- CONTINUOUS SUPPLY
- CONTINUOUS EXHAUST

*CFM NOTED ON PLAN

- UNIT REFLECTED CEILING PLAN
GENERAL NOTES**
- SEE SHEET G011EW FOR ALL MOUNTING HEIGHTS FOR ALL FINISH MATERIALS, TRIM, AND ELECTRICAL FIXTURES.
 - REVIEW LIGHTING LAYOUT PRIOR TO FRAMING FLOOR AND CEILING JOISTS. WHERE LIGHTING CONFLICTS WITH FRAMING MEMBERS, REVIEW WITH ARCHITECT PRIOR TO MOVING FIXTURES.
 - CENTER FIXTURES ON ROOMS & HALLWAYS UNLESS NOTED OTHERWISE
 - SEE SPEC APPENDICES FOR LIGHTING FIXTURE SCHEDULE
 - SEE SPEC APPENDIX E FOR FINISH MATERIALS
 - CEILING FINISH IS PAINTED GYP BOARD, U.N.O
 - CEILING HEIGHTS ARE DETERMINED BY BOTTOM OF STRUCTURAL FRAMING HEIGHT UNLESS OTHERWISE NOTED.
 - REFER TO A500 SERIES FOR ELECTRICAL FIXTURE SCHEDULE
 - SEE A600 SHEETS FOR STEP LIGHT LOCATIONS

RCP LEGEND

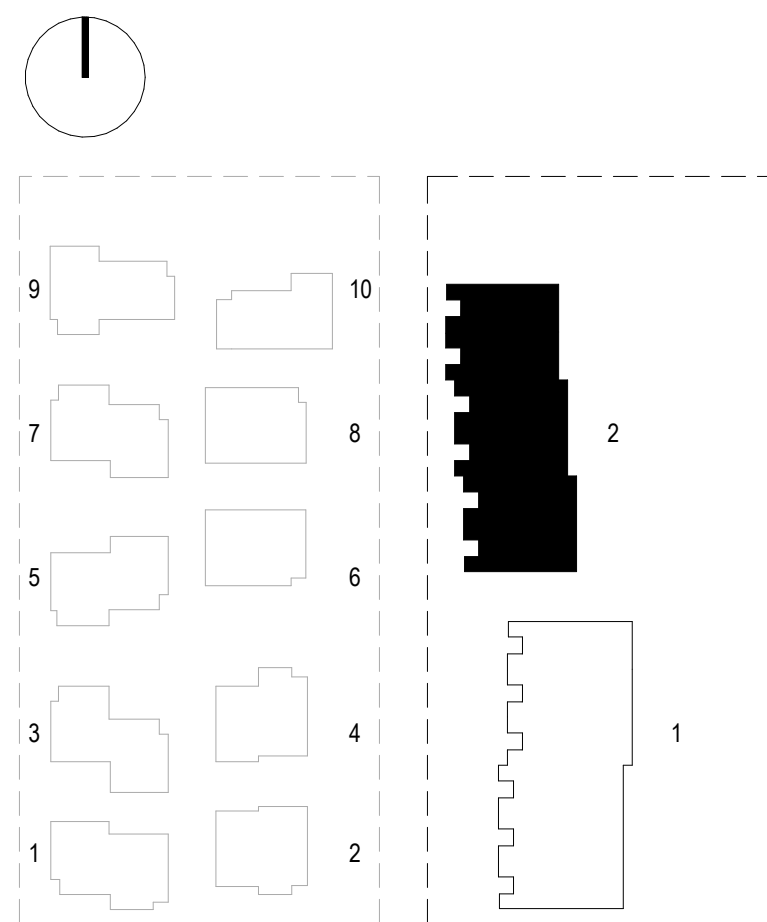
-
-
-

REFLECTED CEILING PLAN LEGEND

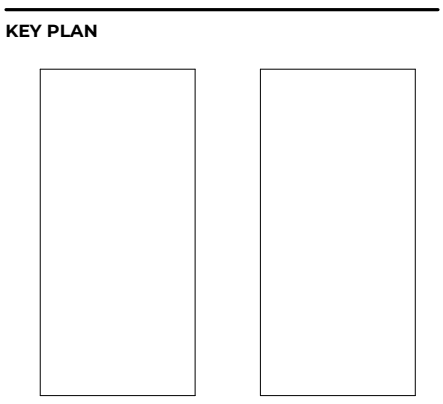
- F01 4" RECESSED DOWNLIGHT
- F01F FIRE RATED 4" RECESSED DOWNLIGHT
- F01W WET RATED 4" RECESSED DOWNLIGHT
- F02 4" RECESSED DOWNLIGHT SLOPED
- F02F FIRE RATED 4" RECESSED DOWNLIGHT SLOPED
- F02W WET RATED 4" RECESSED DOWNLIGHT SLOPED
- F03 SURFACE MOUNTED DOWNLIGHT-CLOSETS
- F04 VANITY SCONCE
- F05 UNDER CABINET LIGHT
- F06 SURFACE MOUNTED DOWNLIGHT-BEDROOMS
- F07A KITCHEN PENDANT LIGHT
- F07B KITCHEN LINEAR PENDANT LIGHT
- F08 DINING CEILING PENDANT
- F09 EXTERIOR SCONCE
- F10 WALL UTILITY
- F15 STEP LIGHT

RCP / ELECTRICAL LEGEND

	240VAC DEDICATED OUTLET
	240VAC DED. ELEC. VEHICLE CHARGING OUTLET @ 42'APP (50 AMP BREAKER)
	DUPLEX OUTLET
	DUPLEX OUTLET (TOP OUTLET SWITCHED)
	QUADPLEX OUTLET
	OUTLET W/ GROUND FAULT INTERRUPT
	WATERPROOF OUTLET W/ GFI
	OUTLET W/ (2) 5V USB PORTS
	120VAC OUTLET FOR APPLIANCE. SEE SPEC.
	FLOOR DUPLEX OUTLET
	FLOOR QUADPLEX OUTLET
	DIMMER WITH ON/OFF SWITCH
	SWITCH
	3-WAY SWITCH
	GARAGE DOOR OPENER SWITCH
	GARAGE DOOR LOW VOLTAGE SENSOR
	CRADLE FOR FAN REMOTE
	COMBO VOICE/DATA JACK
	VOICE JACK
	CEILING WAP DATA. ALIGN W/ ADJ. LIGHTING
	TELEVISION CABLE JACK
	SMOKE DETECTOR
	CARBON MONOXIDE (CO) DETECTOR
	COMBO SMOKE/CO DETECTOR
	MOTION SENSOR
	THERMOSTAT
	CHIMES
	EXHAUST FAN
	RECESSED STRUCTURED MEDIA ENCLOSURE FOR HOME SECURITY & LOW-VOLTAGE
	MEDIA OUTLET



1 EAST BLDG 2 - LEVEL -01 RCP
1/4" = 1'-0" REF: 1B/A600E



STAMP
NOT FOR CONSTRUCTION

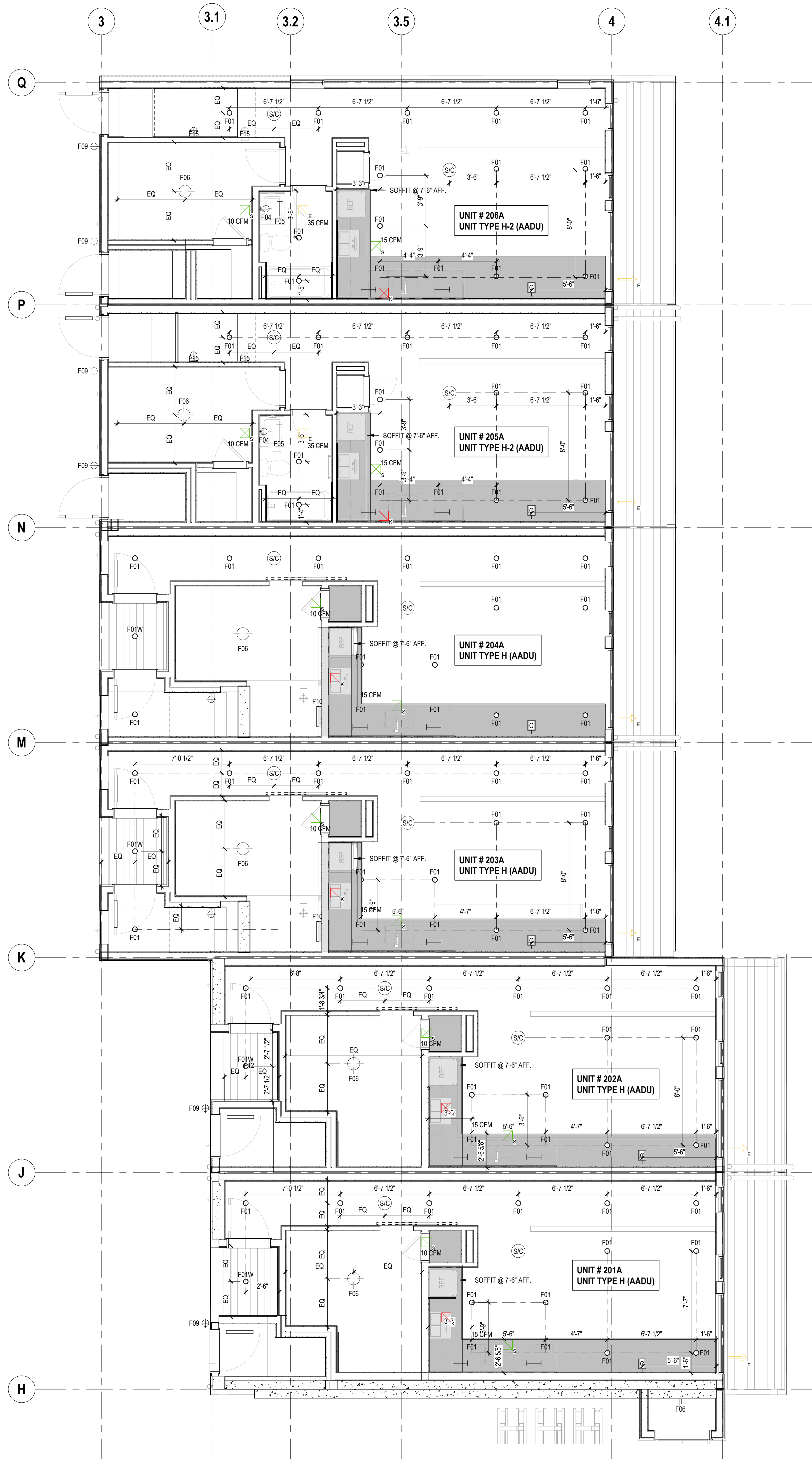
SDC/ STAMP

ISSUES

NO.	DESCRIPTION	DATE

SHEET INFORMATION
REFLECTED CEILING PLAN LEVEL -1 EAST BLDG 2
A155.0E

Storybuilt holds all rights of copyright to these drawings. Any reproduction, alteration, modification, usage or incorporation into other documents may not occur without the prior written permission of Storybuilt.
© 2022 Storybuilt, LLC



MEP LEGEND

- EQ EXHAUST AIR
- S ERV OUTSIDE AIR INTAKE
- D DRYER EXHAUST
- X INTERMITTENT EXHAUST
- S CONTINUOUS SUPPLY
- E CONTINUOUS EXHAUST

*CFM NOTED ON PLAN

UNIT REFLECTED CEILING PLAN
GENERAL NOTES

- SEE SHEET G011EW FOR ALL MOUNTING HEIGHTS FOR ALL FINISH MATERIALS, TRIM, AND ELECTRICAL FIXTURES.
- REVIEW LIGHTING LAYOUT PRIOR TO FRAMING FLOOR AND CEILING JOISTS. WHERE LIGHTING CONFLICTS WITH FRAMING MEMBERS, REVIEW WITH ARCHITECT PRIOR TO MOVING FIXTURES.
- CENTER FIXTURES ON ROOMS & HALLWAYS UNLESS NOTED OTHERWISE
- SEE SPEC APPENDIX FOR LIGHTING FIXTURE SCHEDULE
- SEE SPEC APPENDIX E FOR FINISH MATERIALS
- CEILING FINISH IS PAINTED GYP BOARD, U.N.O
- CEILING HEIGHTS ARE DETERMINED BY BOTTOM OF STRUCTURAL FRAMING HEIGHT UNLESS OTHERWISE NOTED.
- REFER TO A500 SERIES FOR ELECTRICAL FIXTURE SCHEDULE
- SEE A600 SHEETS FOR STEP LIGHT LOCATIONS

RCP LEGEND

- PT-C GYP BD CEILING, FURR DOWN 12" FROM STRUCTURAL FRAMING, TYP.
- WD-5 WOOD SOFFIT
- MTL-1 METAL PANEL

REFLECTED CEILING PLAN LEGEND

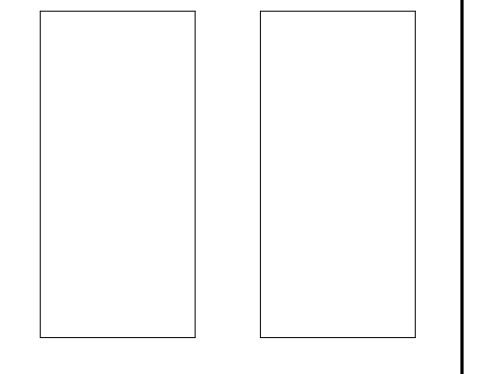
- F01 4" RECESSED DOWNLIGHT
- F01F FIRE RATED
- F01W WET RATED
- F02 4" RECESSED DOWNLIGHT SLOPED
- F02F FIRE RATED
- F02W WET RATED
- F03 SURFACE MOUNTED DOWNLIGHT- CLOSETS
- F04 VANITY SCONCE
- F05 UNDER CABINET LIGHT
- F06 SURFACE MOUNTED DOWNLIGHT- BEDROOMS
- F07A KITCHEN PENDANT LIGHT
- F07B KITCHEN LINEAR PENDANT LIGHT
- F08 DINING CEILING PENDANT
- F09 EXTERIOR SCONCE
- F10 WALL UTILITY
- F15 STEP LIGHT

RCP / ELECTRICAL LEGEND

(SD)	240VAC DEDICATED OUTLET
(CM)	240VAC DED. ELEC. VEHICLE CHARGING OUTLET @ 48" AFF (50 AMP BREAKER)
(SIC)	DUPLEX OUTLET
(S)	DUPLEX OUTLET (TOP OUTLET SWITCHED)
(S)	QUADPLEX OUTLET
(S)	OUTLET W/ GROUND FAULT INTERRUPT
(S)	WATERPROOF OUTLET W/ GFI
(S)	OUTLET W/ (2) 5V USB PORTS
(S)	120VAC OUTLET FOR APPLIANCE. SEE SPEC.
(S)	FLOOR DUPLEX OUTLET
(S)	FLOOR QUADPLEX OUTLET
(S)	DIMMER WITH ON/OFF SWITCH
(S)	SWITCH
(S)	3-WAY SWITCH
(S)	GARAGE DOOR OPENER SWITCH
(S)	GARAGE DOOR LOW VOLTAGE SENSOR
(S)	CRADLE FOR FAN REMOTE
(S)	COMBO VOICE/DATA JACK
(S)	DATA JACK
(S)	VOICE JACK
(S)	CEILING WAP DATA. ALIGN W/ ADJ. LIGHTING
(S)	TELEVISION/CABLE JACK
(S)	SMOKE DETECTOR
(S)	CARBON MONOXIDE (CO) DETECTOR
(S)	COMBO SMOKE/CO DETECTOR
(S)	MOTION SENSOR
(S)	THERMOSTAT
(S)	CHIMES
(S)	EXHAUST FAN
(S)	RECESSED STRUCTURED MEDIA ENCLOSURE FOR HOME SECURITY & LOW-VOLTAGE
(S)	MEDIA OUTLET

1 EAST BLDG 2 - LEVEL 01 RCP
1/4" = 1'-0" REF: 1B/A600E

KEY PLAN



STAMP

NOT FOR CONSTRUCTION

SDCI STAMP

ISSUES

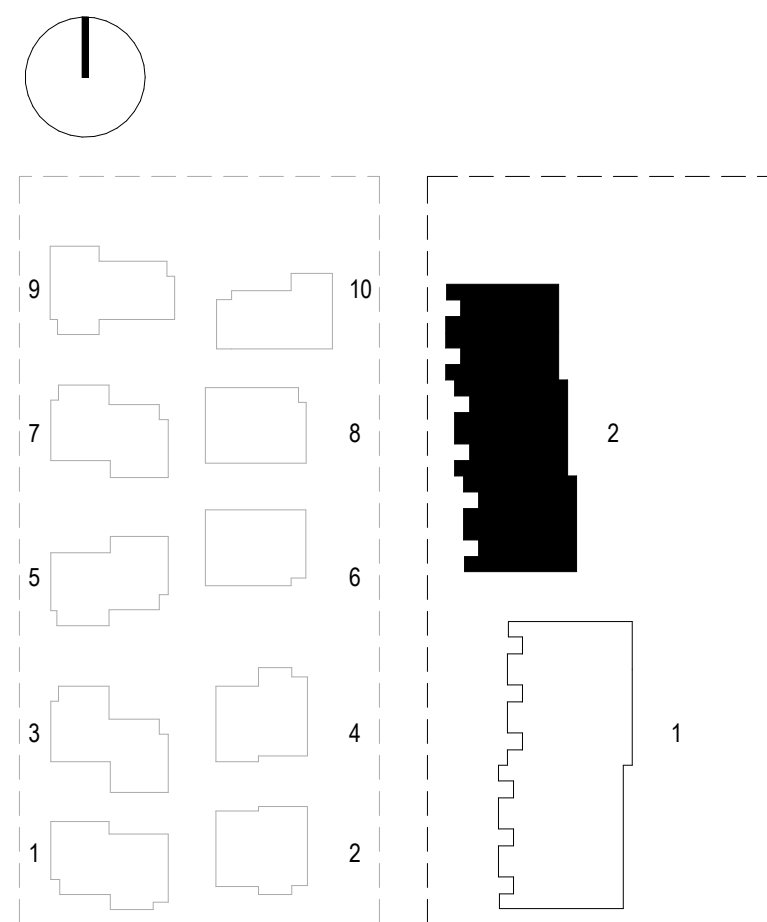
NO.	DESCRIPTION	DATE
100% CD BID SET	06.30.2023	

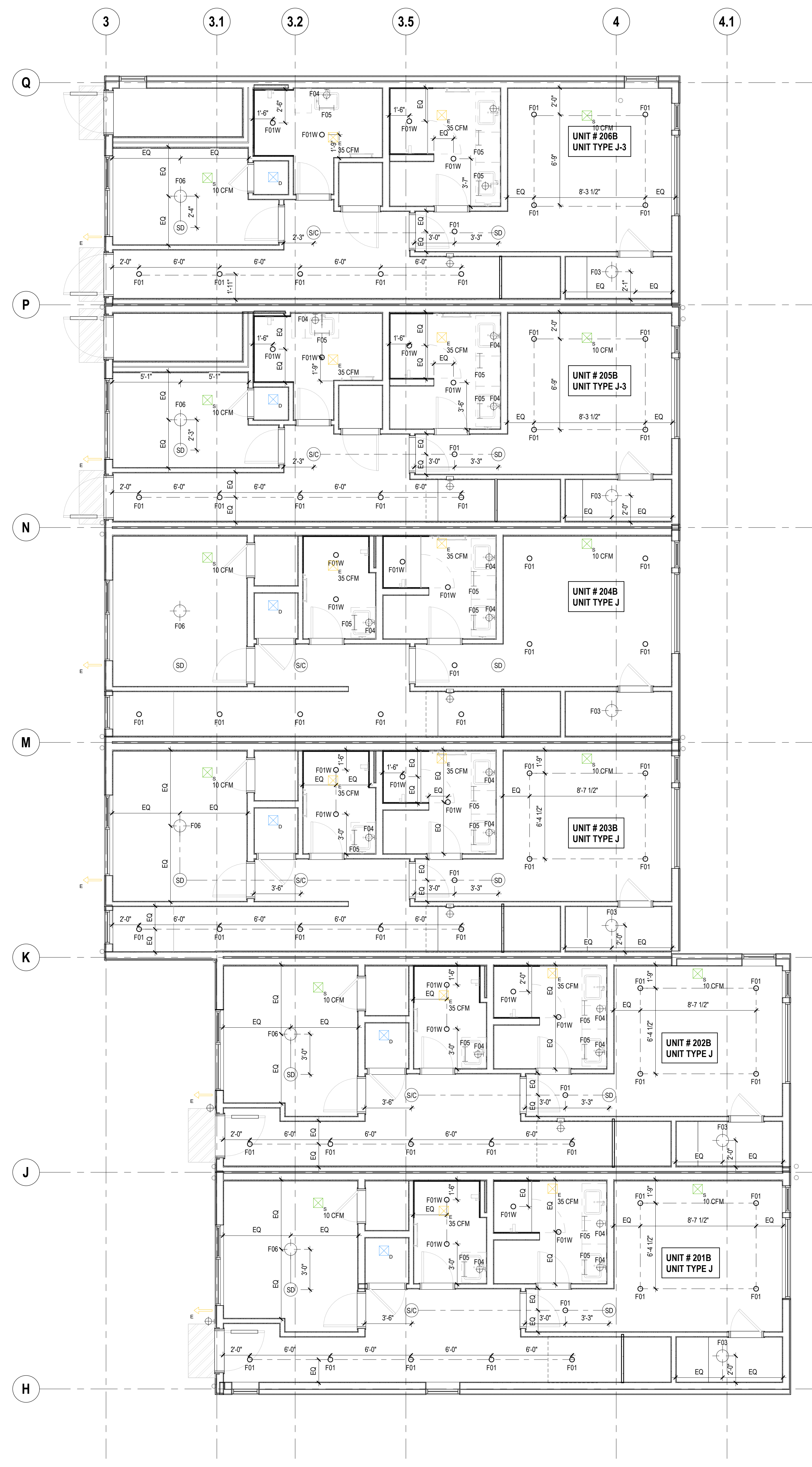
SHEET INFORMATION

REFLECTED CEILING PLAN LEVEL 01 EAST BLDG 2

A155.1E

Storybuilt holds all rights of copyright to these drawings. Any reproduction, alteration, modification, lease or incorporation into other documents may not occur without the prior written permission of Storybuilt.
© 2022 Storybuilt, LLC





MEP LEGEND

- EXHAUST AIR
- ERV OUTSIDE AIR INTAKE
- DRYER EXHAUST
- INTERMITTENT EXHAUST
- CONTINUOUS SUPPLY
- CONTINUOUS EXHAUST

*CFM NOTED ON PLAN

- UNIT REFLECTED CEILING PLAN**
GENERAL NOTES
- SEE SHEET G011EW FOR ALL MOUNTING HEIGHTS FOR ALL FINISH MATERIALS, TRIM, AND ELECTRICAL FIXTURES.
 - REVIEW LIGHTING LAYOUT PRIOR TO FRAMING FLOOR AND CEILING JOISTS. WHERE LIGHTING CONFLICTS WITH FRAMING MEMBERS, REVIEW WITH ARCHITECT PRIOR TO MOVING FIXTURES.
 - CENTER FIXTURES ON ROOMS & HALLWAYS UNLESS NOTED OTHERWISE.
 - SEE SPEC APPENDICES FOR LIGHTING FIXTURE SCHEDULE.
 - SEE SPEC APPENDIX E FOR FINISH MATERIALS.
 - CEILING FINISH IS PAINTED GYP BOARD, U.N.O.
 - CEILING HEIGHTS ARE DETERMINED BY BOTTOM OF STRUCTURAL FRAMING HEIGHT UNLESS OTHERWISE NOTED.
 - REFER TO A500 SERIES FOR ELECTRICAL FIXTURE SCHEDULE.
 - SEE A600 SHEETS FOR STEP LIGHT LOCATIONS.

RCP LEGEND

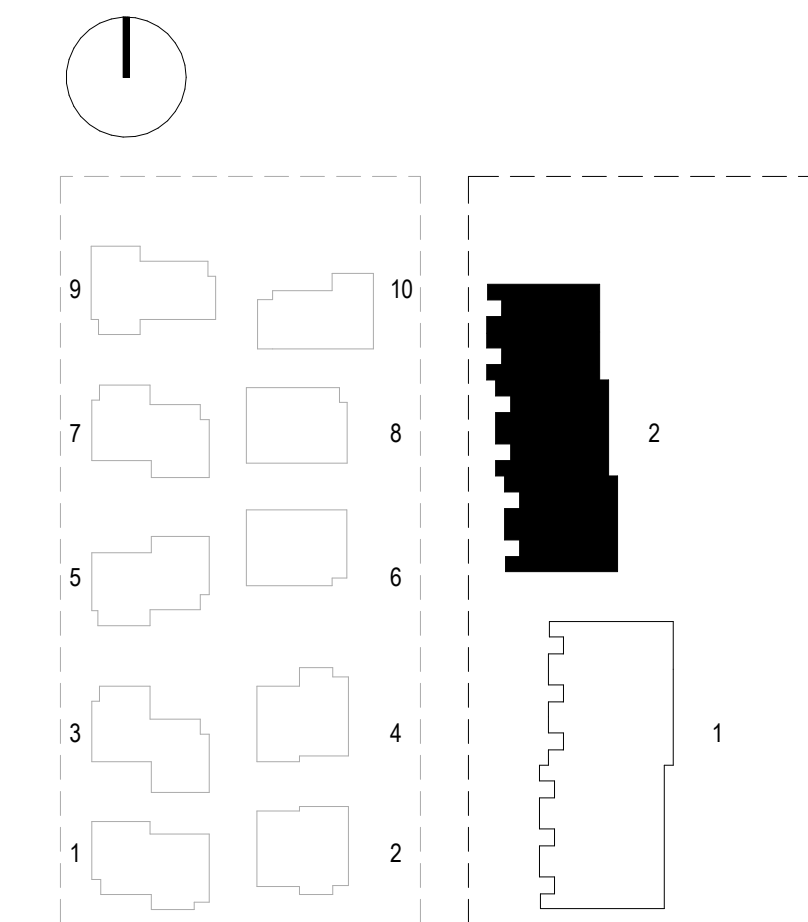
- PT-C GYP BD CEILING, FURR DOWN 12" FROM STRUCTURAL FRAMING, TYP.
- WB-5 WOOD SOFFIT
- MTL-1 METAL PANEL

REFLECTED CEILING PLAN LEGEND

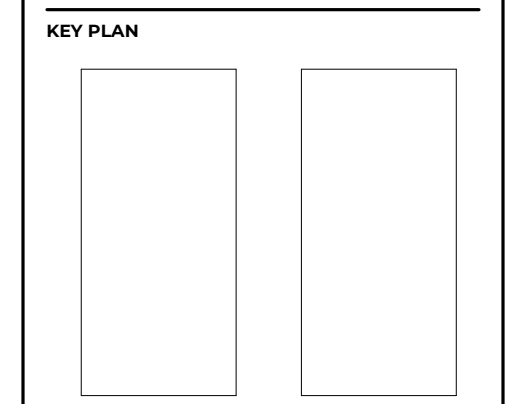
- F01 4" RECESSED DOWNLIGHT
- F01F FIRE RATED
- F01W WET RATED
- F02 4" RECESSED DOWNLIGHT SLOPED
- F02F FIRE RATED
- F02W WET RATED
- F03 SURFACE MOUNTED DOWNLIGHT - CLOSETS
- F04 VANITY SCENCE
- F05 UNDER CABINET LIGHT
- F06 SURFACE MOUNTED DOWNLIGHT - BEDROOMS
- F07A KITCHEN PENDANT LIGHT
- F07B KITCHEN LINEAR PENDANT LIGHT
- F08 DINING CEILING PENDANT
- F09 EXTERIOR SCENCE
- F10 WALL UTILITY
- F15 STEP LIGHT

RCP / ELECTRICAL LEGEND

	240VAC DEDICATED OUTLET
	240VAC DED. ELEC. VEHICLE CHARGING OUTLET @ 42'AMP (50 AMP BREAKER)
	DUPLEX OUTLET
	DUPLEX OUTLET (TOP OUTLET SWITCHED)
	QUADPLEX OUTLET
	OUTLET W/ GROUND FAULT INTERRUPT
	WATERPROOF OUTLET W/ GFI
	OUTLET W/ (2) 5V USB PORTS
	120VAC OUTLET FOR APPLIANCE. SEE SPEC.
	FLOOR DUPLEX OUTLET
	FLOOR QUADPLEX OUTLET
	DIMMER WITH ON/OFF SWITCH
	SWITCH
	3-WAY SWITCH
	GARAGE DOOR OPENER SWITCH
	GARAGE DOOR LOW VOLTAGE SENSOR
	CRADLE FOR FAN REMOTE
	COMBO VOICE/DATA JACK
	VOICE JACK
	CEILING WAP DATA. ALIGN W/ ADJ. LIGHTING
	TELEVISION CABLE JACK
	SMOKE DETECTOR
	CARBON MONOXIDE (CO) DETECTOR
	COMBO SMOKE/CO DETECTOR
	MOTION SENSOR
	THERMOSTAT
	CHIMES
	EXHAUST FAN
	RECESSED STRUCTURED MEDIA ENCLOSURE FOR HOME SECURITY & LOW-VOLTAGE
	MEDIA OUTLET



1 EAST BLDG 2 - LEVEL 02 RCP
1/4" = 1'-0" REF: 1B/A600E



STAMP
NOT FOR CONSTRUCTION

SDCI STAMP

ISSUES

NO.	DESCRIPTION	DATE
100% CD BID SET		06.30.2023



MEP LEGEND

- EQ EXHAUST AIR
- ERV OUTSIDE AIR INTAKE
- DRYER EXHAUST
- INTERMITTENT EXHAUST
- CONTINUOUS SUPPLY
- CONTINUOUS EXHAUST

*CFM NOTED ON PLAN

- UNIT REFLECTED CEILING PLAN GENERAL NOTES**
- SEE SHEET G011EW FOR ALL MOUNTING HEIGHTS FOR ALL FINISH MATERIALS, TRIM, AND ELECTRICAL FIXTURES.
 - REVIEW LIGHTING LAYOUT PRIOR TO FRAMING FLOOR AND CEILING JOISTS. WHERE LIGHTING CONFLICTS WITH FRAMING MEMBERS, REVIEW WITH ARCHITECT PRIOR TO MOVING FIXTURES.
 - CENTER FIXTURES ON ROOMS & HALLWAYS UNLESS NOTED OTHERWISE.
 - SEE SPEC APPENDICES FOR LIGHTING FIXTURE SCHEDULE.
 - SEE SPEC APPENDIX E FOR FINISH MATERIALS.
 - CEILING FINISH IS PAINTED GYP BOARD, U.N.O.
 - CEILING HEIGHTS ARE DETERMINED BY BOTTOM OF STRUCTURAL FRAMING HEIGHT UNLESS OTHERWISE NOTED.
 - REFER TO A500 SERIES FOR ELECTRICAL FIXTURE SCHEDULE.
 - SEE A600 SHEETS FOR STEP LIGHT LOCATIONS.

RCP LEGEND

- PT-C GYP BD CEILING, FURR DOWN 12" FROM STRUCTURAL FRAMING, TYP.
- WD-5 WOOD SOFFIT
- MTL-1 METAL PANEL

REFLECTED CEILING PLAN LEGEND

- F01 4" RECESSED DOWNLIGHT
- F01F FIRE RATED
- F01W WET RATED
- F02 4" RECESSED DOWNLIGHT SLOPED
- F02F FIRE RATED
- F02W WET RATED
- F03 SURFACE MOUNTED DOWNLIGHT - CLOSETS
- F04 VANITY SCONCE
- F05 UNDER CABINET LIGHT
- F06 SURFACE MOUNTED DOWNLIGHT - BEDROOMS
- F07A KITCHEN PENDANT LIGHT
- F07B KITCHEN LINEAR PENDANT LIGHT
- F08 DINING CEILING PENDANT
- F09 EXTERIOR SCONCE
- F10 WALL UTILITY
- F15 STEP LIGHT

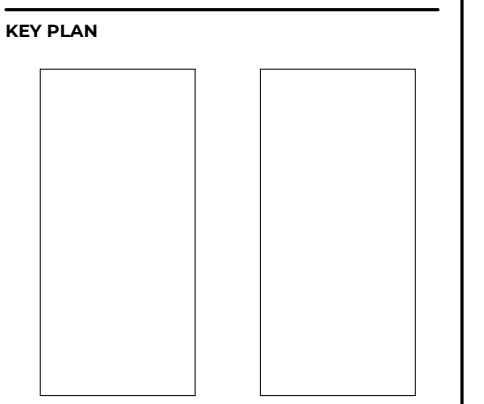
RCP / ELECTRICAL LEGEND

240VAC DEDICATED OUTLET
240VAC DED. ELEC. VEHICLE CHARGING OUTLET @ 40'APF (50 AMP BREAKER)
DUPLEX OUTLET
DUPLEX OUTLET (TOP OUTLET SWITCHED)
QUADPLEX OUTLET
OUTLET W/ GROUND FAULT INTERRUPT
WATERPROOF OUTLET W/ GFI
OUTLET W/ (2) 5V USB PORTS
120VAC OUTLET FOR APPLIANCE. SEE SPEC.
FLOOR DUPLEX OUTLET
FLOOR QUADPLEX OUTLET
DIMMER WITH ON/OFF SWITCH
SWITCH
3-WAY SWITCH
GARAGE DOOR OPENER SWITCH
GARAGE DOOR LOW VOLTAGE SENSOR
CRADLE FOR FAN REMOTE
COMBO VOICE/DATA JACK
DATA JACK
VOICE JACK
CEILING WAP DATA. ALIGN W/ ADJ. LIGHTING
TELEVISION CABLE JACK
SMOKE DETECTOR
CARBON MONOXIDE (CO) DETECTOR
COMBO SMOKE/CO DETECTOR
MOTION SENSOR
THERMOSTAT
CHIMES
EXHAUST FAN
RECESSED STRUCTURED MEDIA ENCLOSURE FOR HOME SECURITY & LOW-VOLTAGE
MEDIA OUTLET

storybuilt.
 900 S. 3rd St., Suite 703
 Austin, Texas 78704
 512.289.1833
 storybuilt.com

SUMIE EAST PARCEL
 2123 18th Ave S.
 Seattle, Washington 98144
 @project: 2023

1 EAST BLDG 2 - LEVEL 03 RCP
 1/4" = 1'-0" REF: ZC/A600E



STAMP
NOT FOR CONSTRUCTION

SDCI STAMP

ISSUES

NO.	DESCRIPTION	DATE
100%	CD BID SET	06.30.2023

REFLECTED CEILING PLAN LEVEL 03 EAST BLDG 2

A155.3E

Storybuilt holds all rights of copyright to these drawings. Any reproduction, alteration, modification, lease or incorporation into other documents may not occur without the prior written permission of Storybuilt.
 © 2022 Storybuilt, LLC